

SUPPLEMENTAL DATA

Comprehensive exosomal microRNA profile and construction of competing endogenous RNA network in autism spectrum disorder: A pilot study

	Index	Age (months)	Paternal education	Maternal education	Severity level	Maternal age (years)	Birth type	Birth weight (kg)	Height (cm)	Weight (kg)	CARS score	ABC score
ASD	1	32	College	College	3	25	C-section	2,9	91	12	32	96
	2	41	College	Middle school	2	34	C-section	3,25	90	15	39	75
	3	40	College	College	3	27	Vaginal	3,5	115	10	42	87
	4	42	College	College	1	27	C-section	3,35	92	14	31	78
	5	52	College	College	3	23	C-section	3,5	111	28	39	92
	6	41	College	College	2	28	C-section	4,3	108	17	37	69
	7	46	College	Master	1	27	C-section	4,3	102	20	35	73

	Index	Age (months)	Paternal education	Maternal education	Severity level	Maternal age (years)	Birth type	Birth weight (kg)	Height (cm)	Weight (kg)	CARS score	ABC score
	8	42	College	High school	2	26	Vaginal	3,55	99,5	14,5	43	76
	9	32	High school	High school	2	25	C-section	3,15	100	16	36	119
	10	36	College	College	2	35	Vaginal	3,35	80	10,5	34	85
Controls	1	32	College	College	N/A	27	C-section	3,2	89	12,5	N/A	12
	2	41	College	College	N/A	31	C-section	4,25	100	13,8	N/A	17
	3	40	College	High school	N/A	22	Vaginal	3,3	96,3	13,1	N/A	21
	4	31	College	College	N/A	29	C-section	3,6	89,6	12,3	N/A	15
	5	36	High school	Middel School	N/A	23	C-section	2,95	96,3	12,9	N/A	18
	6	47	Master	College	N/A	32	Vaginal	3,05	102,3	14,2	N/A	14
	7	50	College	High school	N/A	26	C-section	3,35	106,5	13,9	N/A	13
	8	45	High school	College	N/A	25	Vaginal	3,25	100,6	14	N/A	20
	9	43	College	College	N/A	28	Vaginal	3,35	98,7	12,9	N/A	11
	10	49	College	College	N/A	27	Vaginal	3,4	105,3	13,5	N/A	10

Table S1. Demographic information of the participants in this study. ASD: Autism spectrum disorder; CARS: Childhood Autism Rating Scale; ABC: Autism Behavior Scale; N/A: Not applicable.

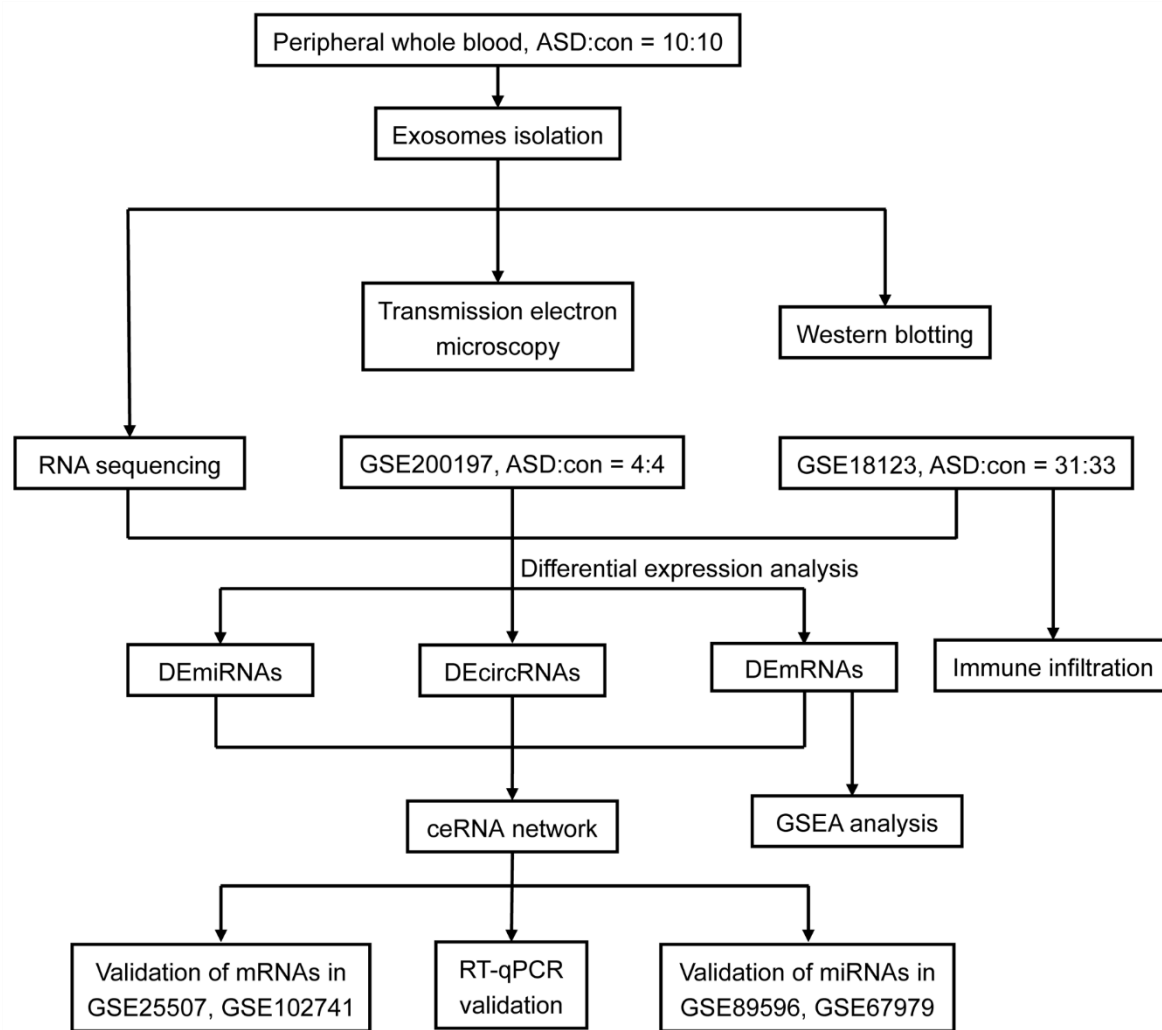


Figure S1. The flowchart of the study.

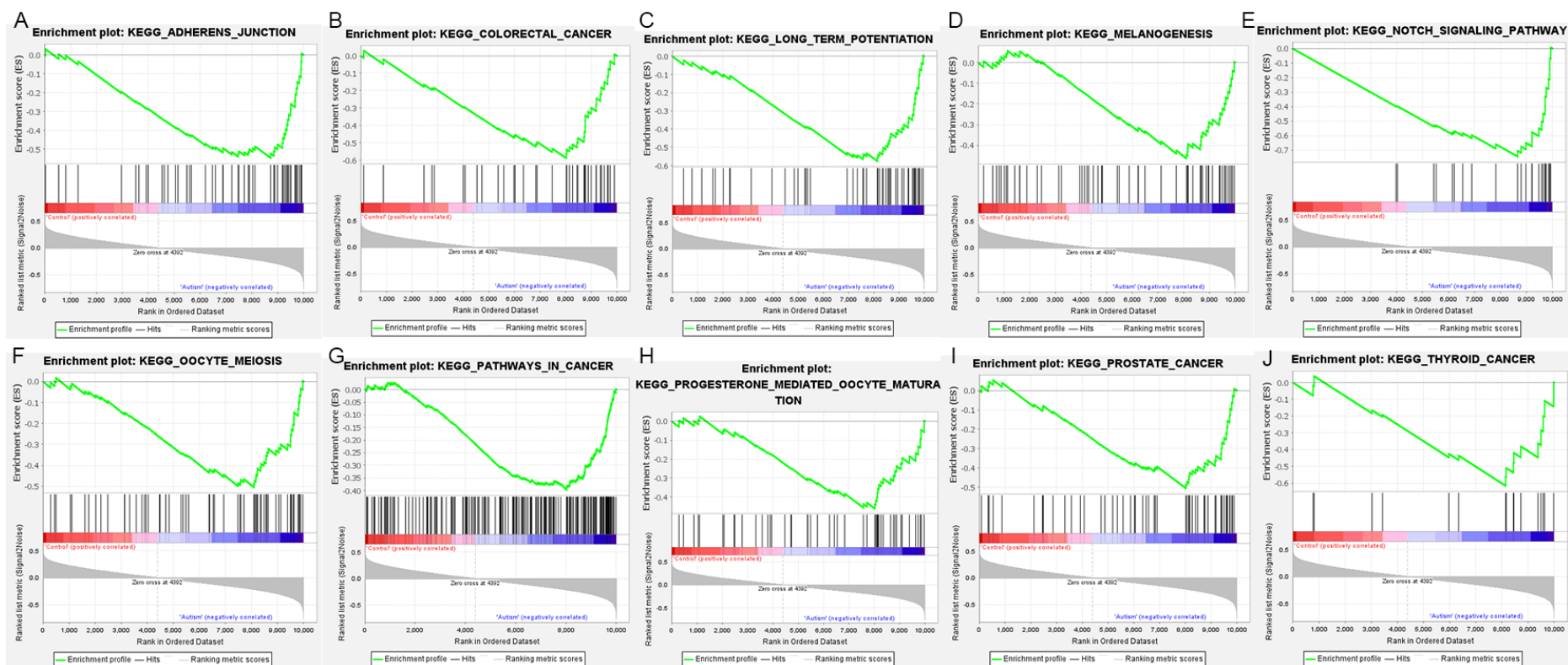
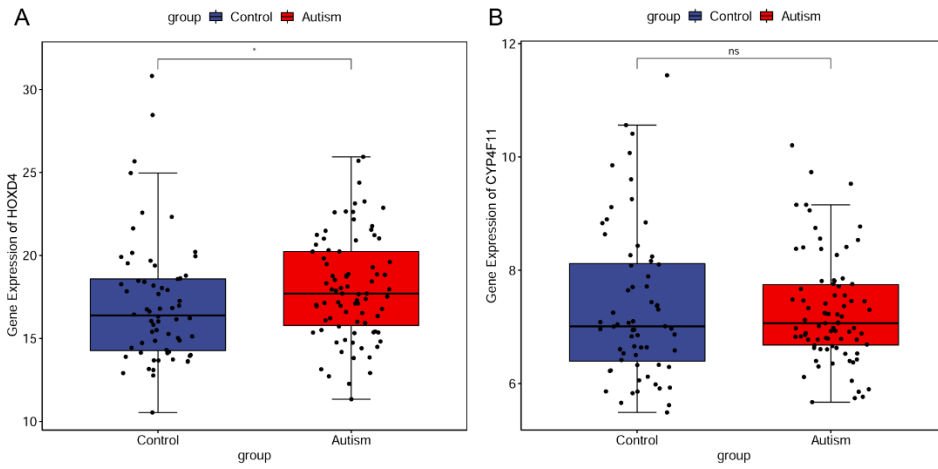


Figure S2. GSEA analysis illustrated upregulated gene sets in ASD: (A) adherens junction; (B) colorectal cancer; (C) long term potentiation; (D) melanogenesis; (E) notch signaling pathway; (F) oocyte meiosis; (G) pathways in cancer; (H) progesterone mediated oocyte maturation; (I) prostate cancer; (J) thyroid cancer. GSEA: Gene set enrichment analysis; ASD: Autism spectrum disorder.

GSE25507



GSE102741

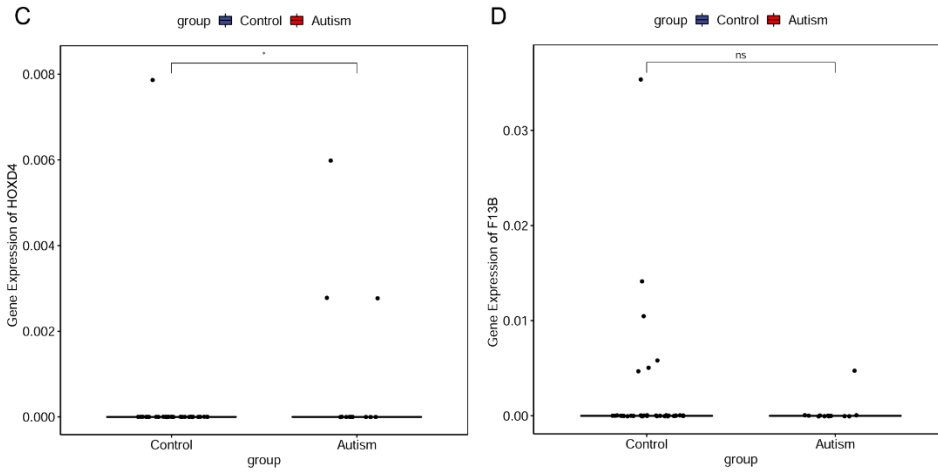


Figure S3. Validation of mRNAs in GSE25507 (A-B) and GSE102741 (C-D). (A) *HOXD4*, (B) *CYP4F11*, (C) *HOXD4*, (D) *F13B*. * $P < 0.05$

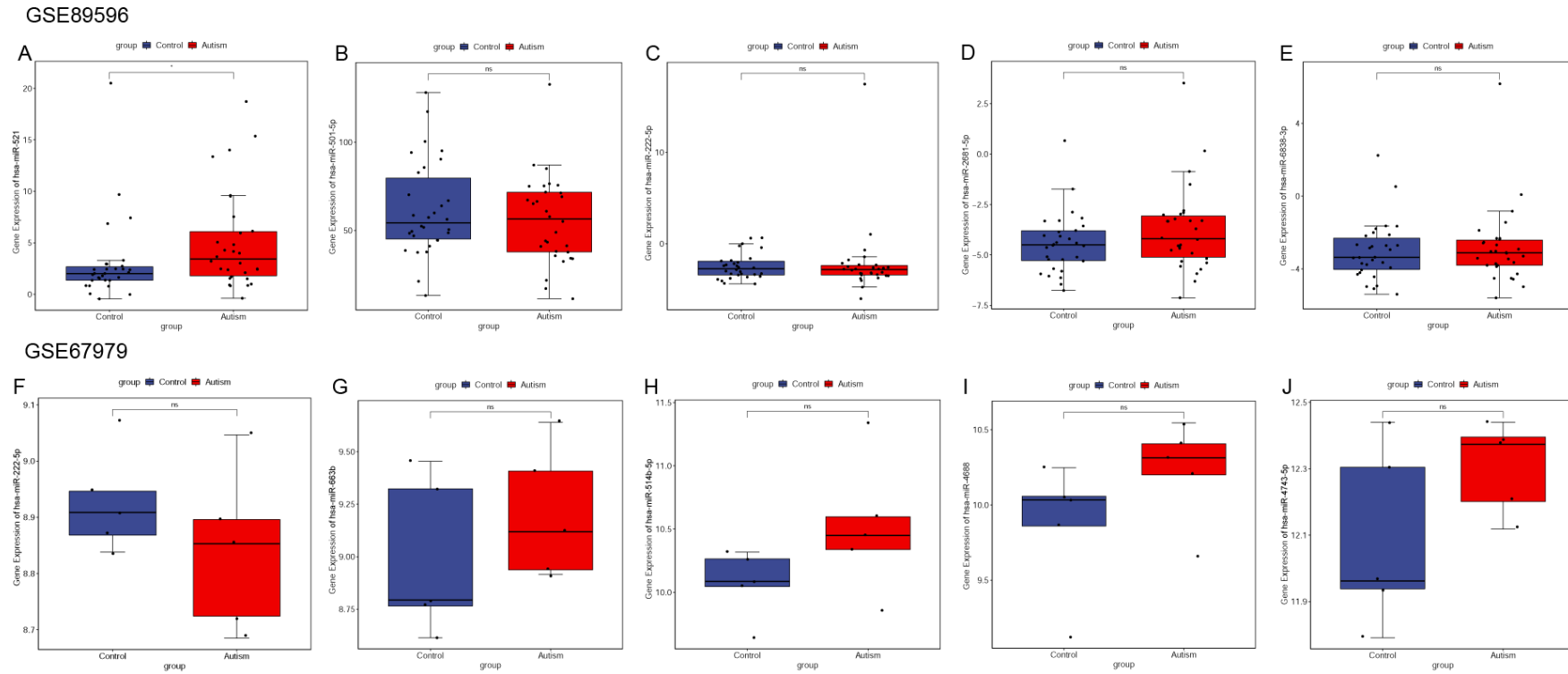


Figure S4. Validation of miRNAs in GSE89596 (A-E) and GSE67979 (F-J). (A) hsa-miR-521; (B) hsa-miR-501-5p; (C) hsa-miR-222-5p; (D) hsa-miR-2681-5p; (E) hsa-miR-6838-3p; (F) hsa-miR-222-5p; (G) hsa-miR-663b; (H) hsa-miR-514b-5p; (I) hsa-miR-4688; (J) hsa-miR-4743-5p. * $P < 0.05$