

SUPPLEMENTARY DATA

Establishment of predictive nomogram and web-based survival risk calculator for desmoplastic small round cell tumor: A propensity score-adjusted, population-based study

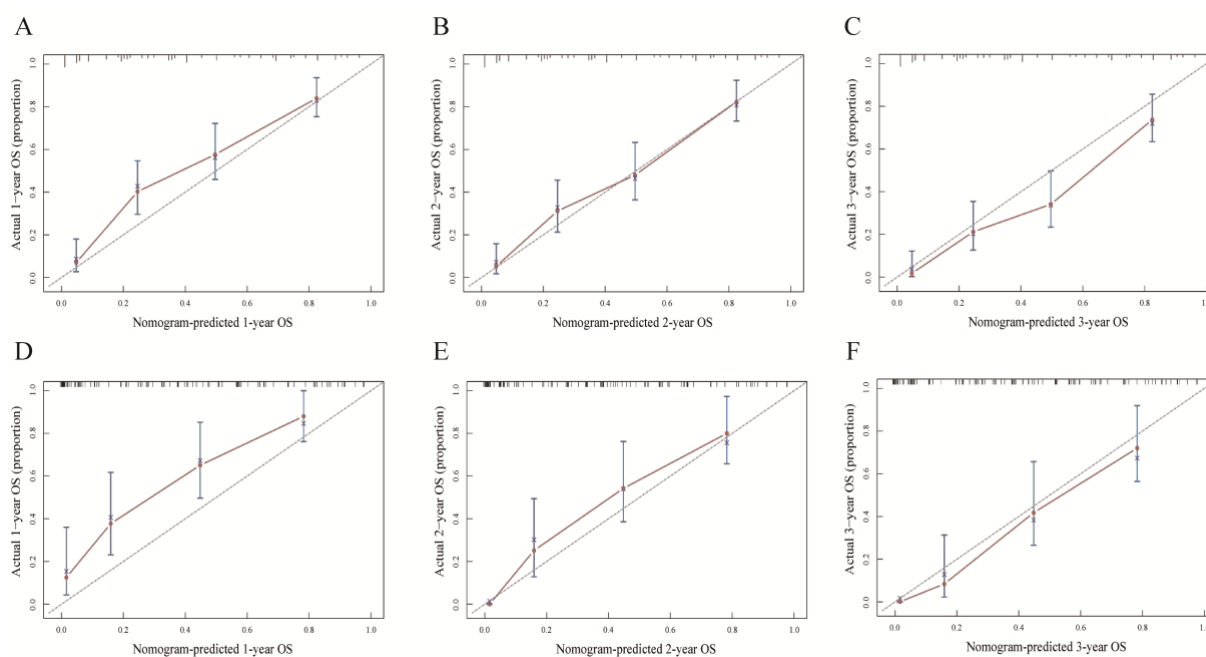


Figure S1. The calibration curves predicting 1-year (A and D), 2-year (B and E), and 3-year (C and F) OS in the training group and the validation group. OS: Overall survival.

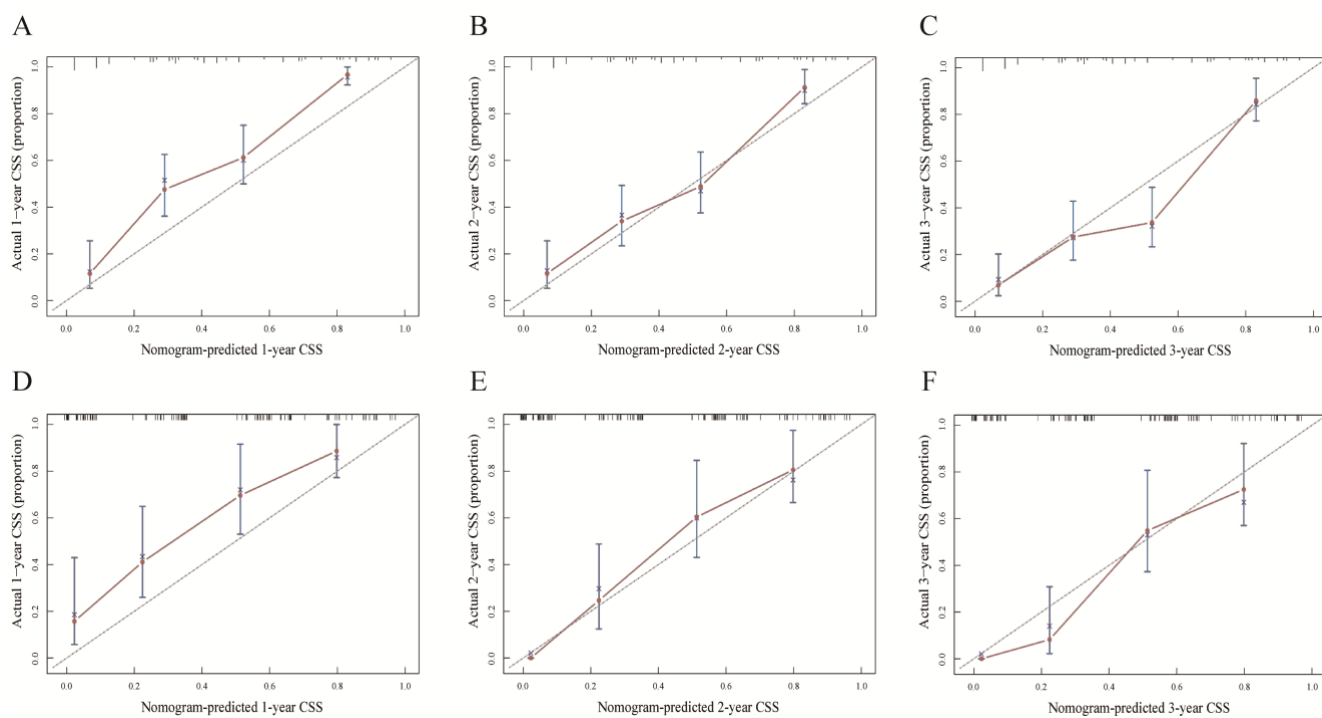


Figure S2. The calibration curves predicting 1-year (A and D), 2-year (B and E), and 3-year (C and F) CSS in the training group and the validation group. CSS: Cancer-specific survival.

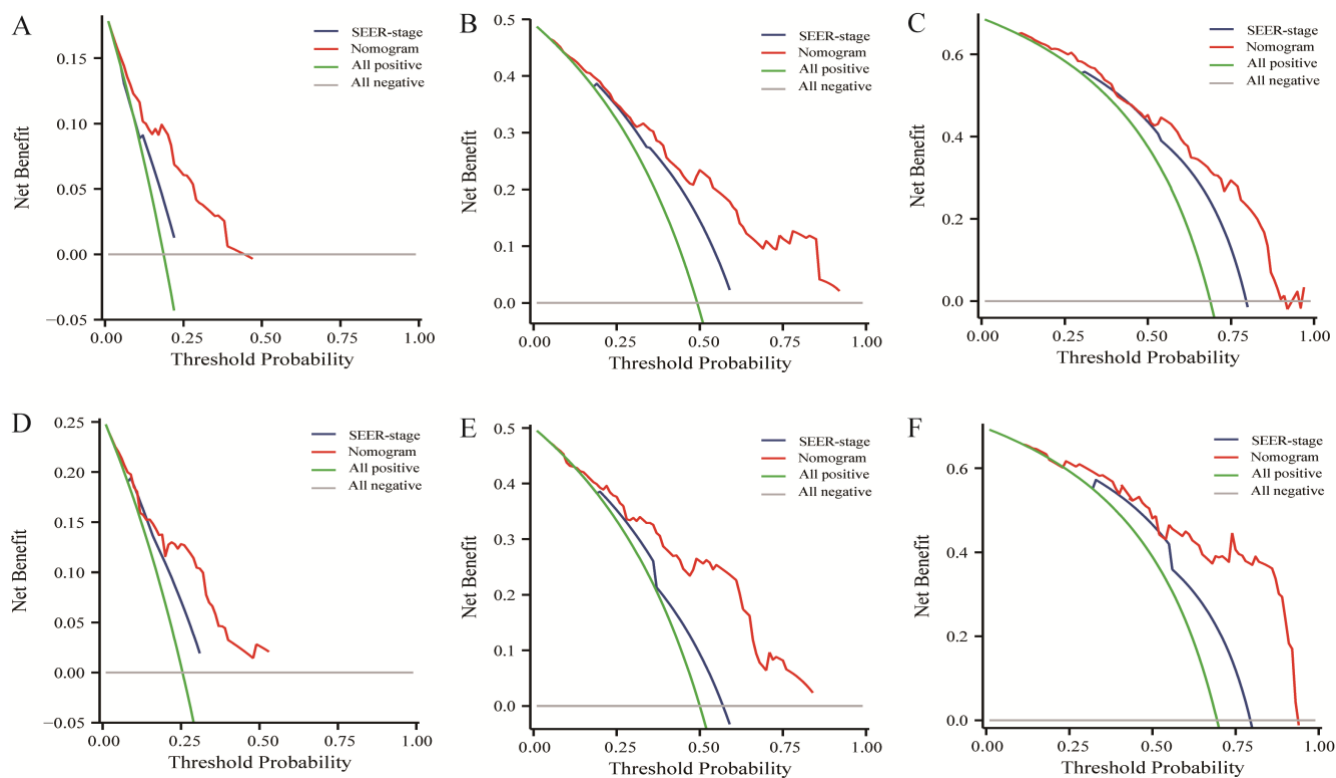


Figure S3. The nomogram and the SEER-stage of the decision curve analysis in the prediction of overall survival at the 1-year (A and D), 2-year (B and E) and 3-year (C and F) point in the training and the validation group.

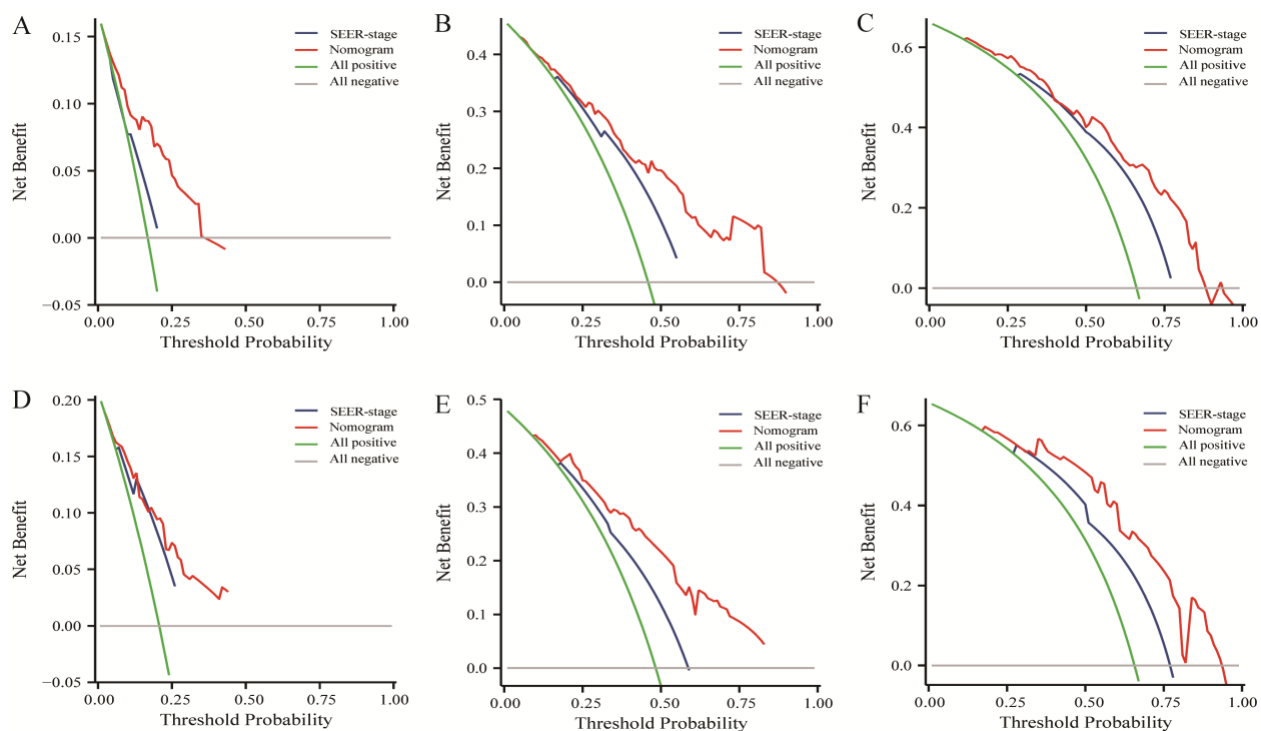


Figure S4. The nomogram and the SEER-stage of the decision curve analysis in the prediction of cancer-specific survival at the 1-year (A and D), 2-year (B and E) and 3-year (C and F) point in the training and the validation group. SEER: Surveillance, Epidemiology, and End Results.

Table S1. Propensity-matched score analysis of triple-therapy (SRC) with surgery plus chemotherapy (SC).

Characteristics	Unmatched		<i>P</i> value	Matched		<i>P</i> value
	SRC N = 71	SC N = 112		SRC N = 71	SC N = 71	
Years of diagnosis			0.393			0.736
2000-2009	33 (46.5%)	46 (41.1%)		33 (46.5%)	31 (43.7%)	
2010-2019	38 (53.5%)	66 (58.9%)		38 (53.5%)	40 (56.3%)	
Age			<0.001			0.397
< 18	43 (60.6%)	35 (31.2%)		43 (60.6%)	35 (49.3%)	
18-30	13 (18.3%)	41 (36.6%)		13 (18.3%)	16 (22.5%)	
> 30	15 (21.1%)	36 (32.2%)		15 (21.1%)	20 (28.2%)	
Sex			0.011			0.225
Male	41 (57.7%)	84 (75.0%)		41 (57.7%)	48 (67.6%)	
Female	30 (42.3%)	28 (25.0%)		30 (42.3%)	23 (32.4%)	
Race			0.314			0.243
White	50 (70.4%)	68 (60.7%)		50 (70.4%)	41 (57.8%)	
Black	15 (21.1%)	27 (24.1%)		15 (21.1%)	19 (26.7%)	
Others	6 (8.5%)	17 (15.2%)		6 (8.5%)	11 (15.5%)	
Household income			0.111			0.731
< 70000\$	44 (62.0%)	75 (67.0%)		44 (62.0%)	42 (59.2%)	
≥ 70000\$	27 (38.0%)	37 (33.0%)		27 (38.0%)	29 (40.8%)	
Marital status			0.154			0.339
Married	16 (22.5%)	36 (32.1%)		16 (22.5%)	21 (29.6%)	
Others	55 (77.5%)	76 (67.9%)		55 (77.5%)	50 (70.4%)	
Grade			0.273			0.857
Unknown	48 (67.6%)	84 (75.0%)		48 (67.6%)	49 (69.0%)	
III-IV	23 (32.4%)	28 (25.0%)		23 (32.4%)	22 (31.0%)	
Primary Site			0.482			0.864
Abdomen/pelvis	42 (59.2%)	82 (73.2%)		42 (59.2%)	43 (60.6%)	
Others	29 (40.8%)	30 (26.8%)		29 (40.8%)	28 (39.4%)	
Laterality			0.558			0.826
Others	59 (83.1%)	96 (85.7%)		59 (83.1%)	58 (81.7%)	
Paired	12 (16.9%)	16 (14.3%)		12 (16.9%)	13 (18.3%)	
Tumor size			0.317			0.497
Others	28 (39.4%)	52 (46.4%)		28 (39.4%)	32 (45.1%)	
> 4 cm	43 (60.6%)	60 (53.6%)		43 (60.6%)	39 (54.9%)	
SEER-stage			0.083			0.548
Localized	17 (23.9%)	13 (11.6%)		17 (23.9%)	12 (16.9%)	
Regional	14 (19.7%)	28 (25.0%)		14 (19.7%)	17 (23.9%)	
Distant	40 (56.4%)	71 (63.4%)		40 (56.4%)	42 (59.2%)	