

SUPPLEMENTAL DATA

Role of Fascin-1 in cervical cancer metastasis via Wnt/ β -catenin pathway activation

Yan Wang, Wei Cui, Dong-Mei Chu*

Department of Gynecology, The Fourth Hospital of Shijiazhuang, Shijiazhuang, Hebei province,
China

*Correspondence to Dong-Mei Chu: chudongmei0624@163.com

DOI: <https://doi.org/10.17305/bb.2025.12114>

Full article is available at the following link:

<https://www.bjbms.org/ojs/index.php/bjbms/article/view/12114>

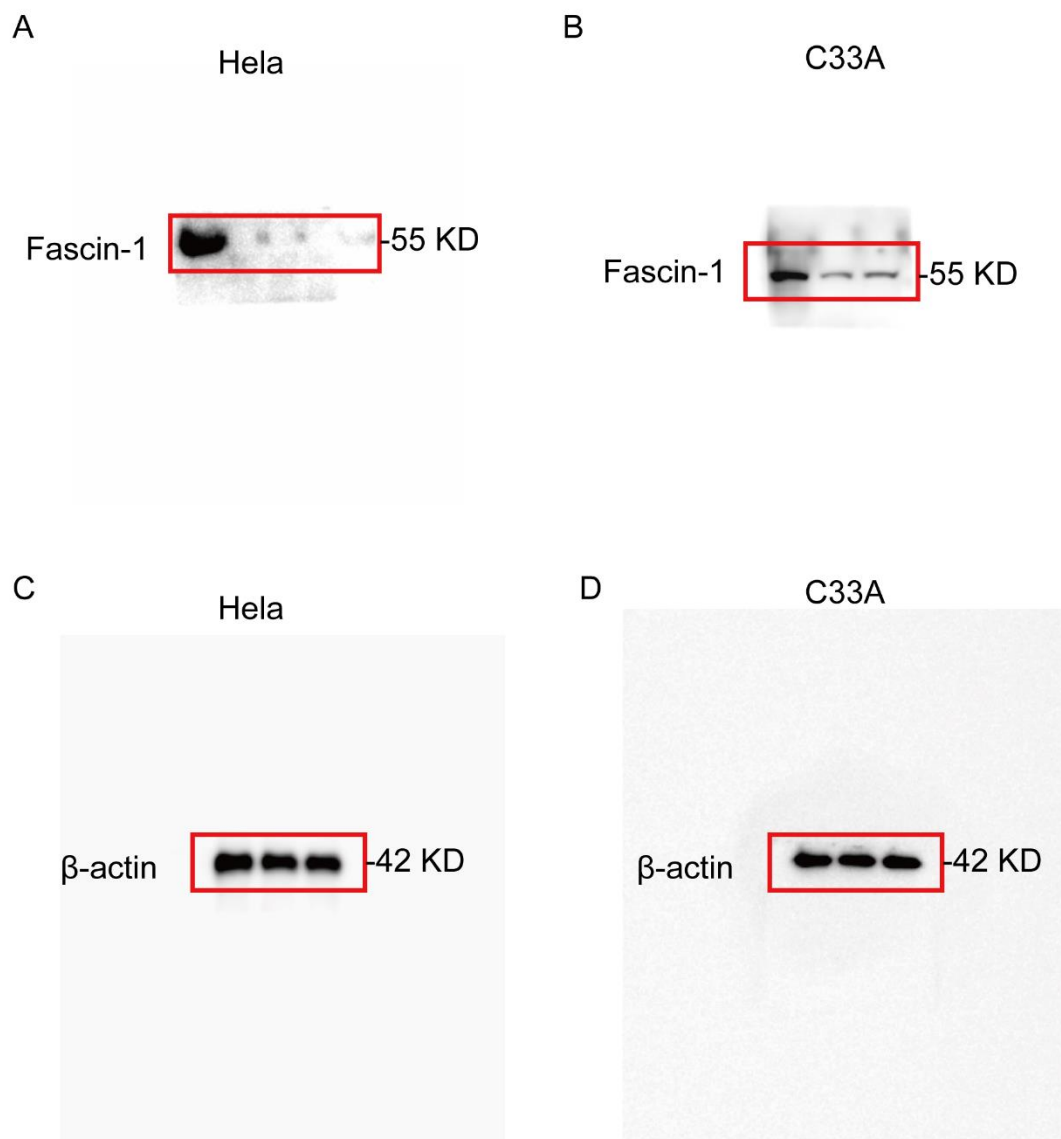


Figure S1. (A) and (B) Original western images for Fascin-1 in Fig2A. (C) and (D) Original western images for β -actin in Fig 2A.

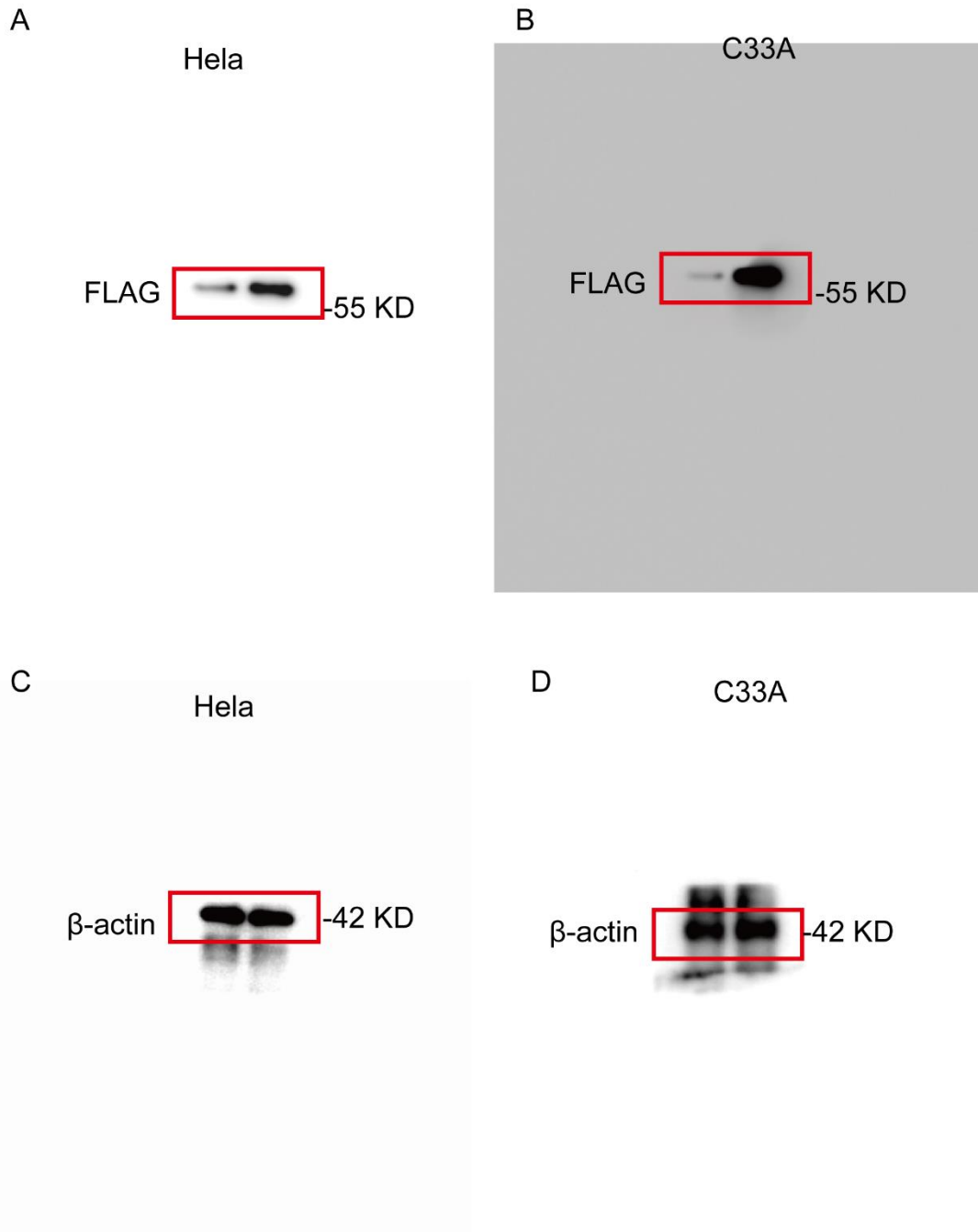


Figure S2. (A) and (B) Original western images for FLAG in Fig 2E. (C) and (D) Original western images for β -actin in Fig 2E.

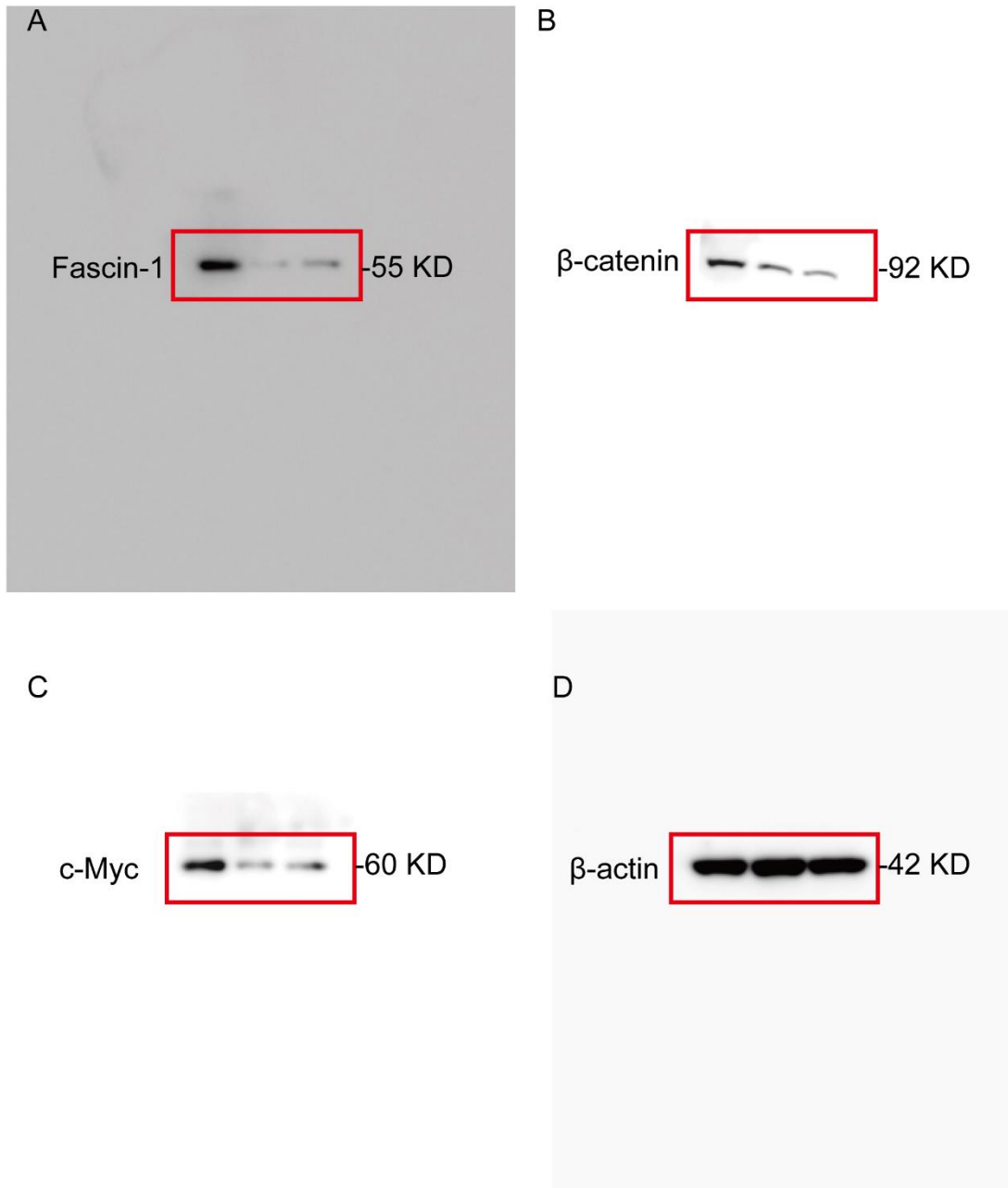


Figure S3. (A) Original western images of HeLa cells Fascin-1 in Figure 5E. (B) Original western images of HeLa cells β -catenin in Figure 5E. (C) Original western images of HeLa cells c-Myc in Figure 5E. (D) Original western images of HeLa cells β -actin in Figure 5E.

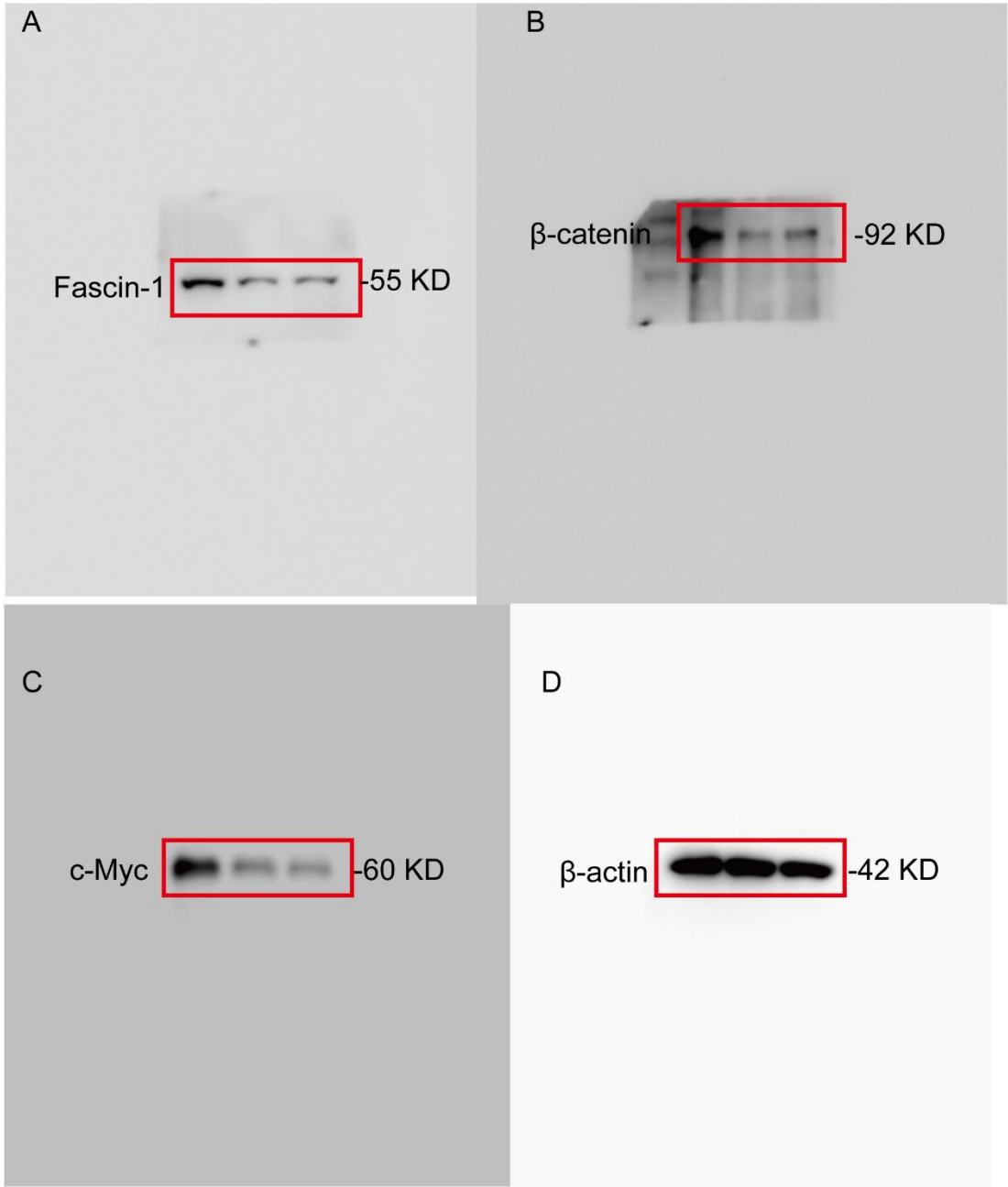


Figure S4. (A) Original western images of C33A cells Fascin-1 in Figure 5E. (B) Original western images of C33A cells β -catenin in Figure 5E. (C) Original western images of C33A cells c-Myc in Figure 5E. (D) Original western images of C33A cells β -actin in Figure 5E.

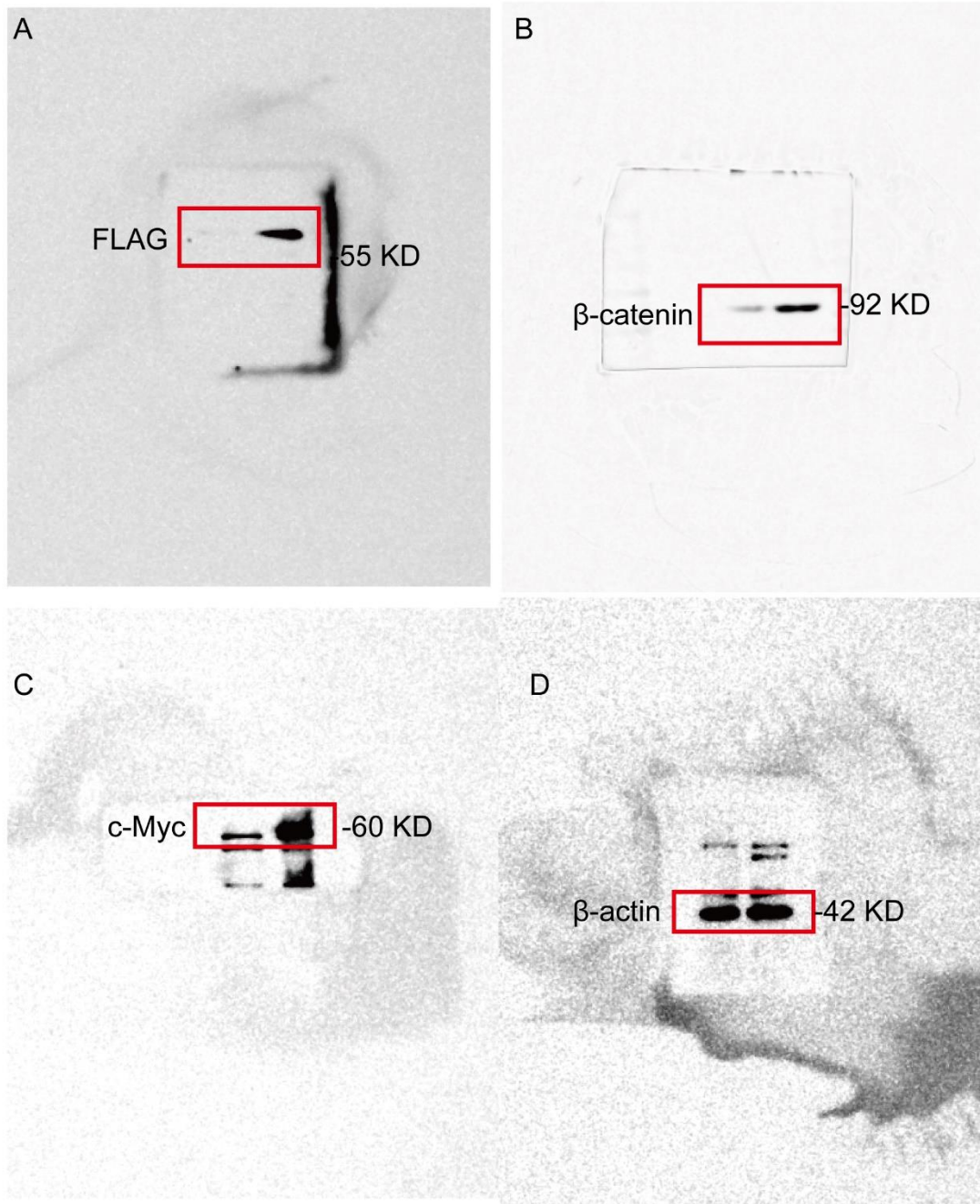


Figure S5. (A) Original western images of HeLa cells FLAG in Figure 5F. (B) Original western images of HeLa cells β -catenin in Figure 5F. (C) Original western images of HeLa cells c-Myc in Figure 5F. (D) Original western images of HeLa cells β -actin in Figure 5F.

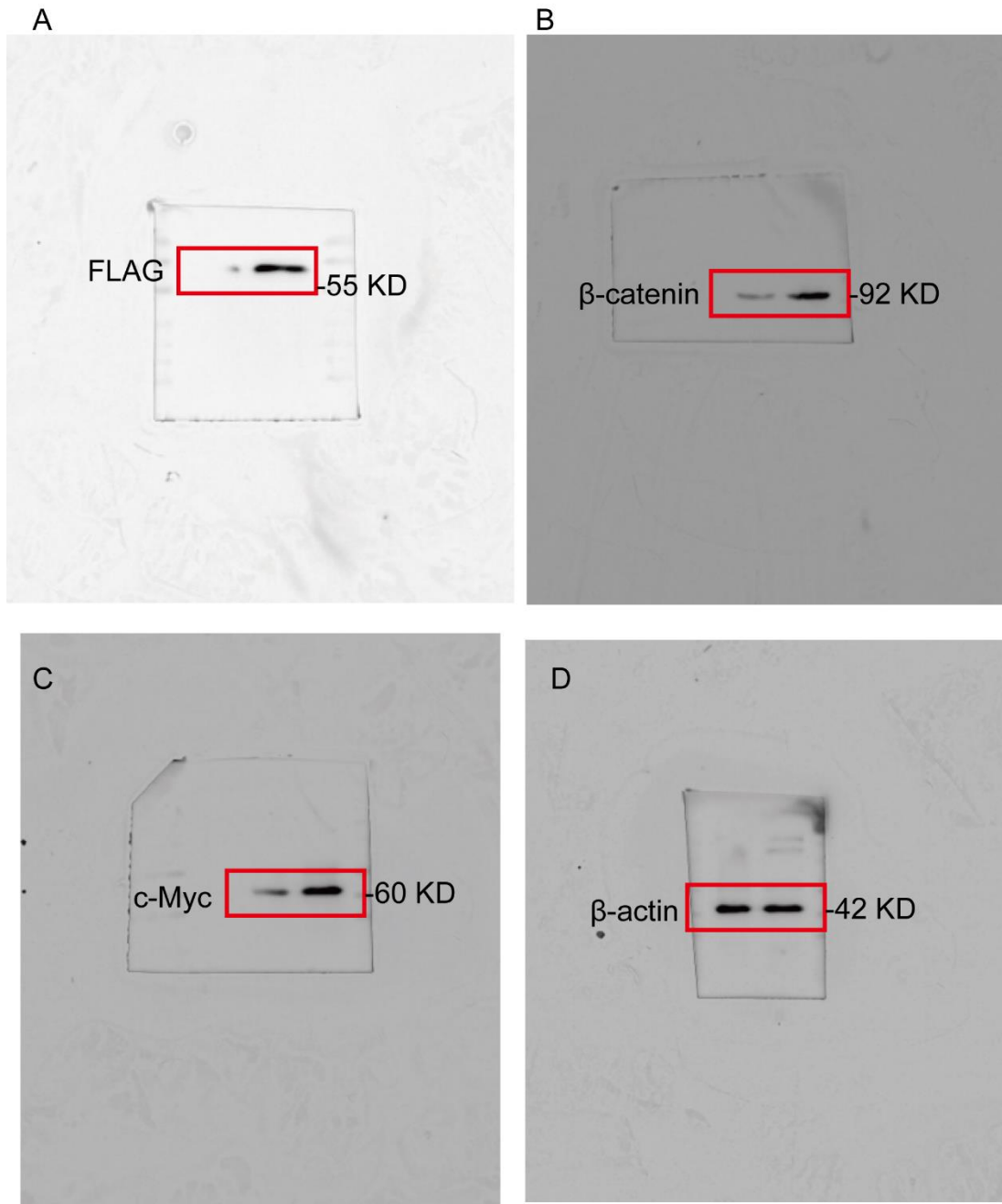


Figure S6. (A) Original western images of C33A cells FLAG in Figure 5F. (B) Original western images of C33A cells β -catenin in Figure 5F. (C) Original western images of C33A cells c-Myc in Figure 5F. (D) Original western images of C33A cells β -actin in Figure 5F.