

The BiomolBiomed publishes an "Advanced Online" manuscript format as a free service to authors in order to expedite the dissemination of scientific findings to the research community as soon as possible after acceptance following peer review and corresponding modification (where appropriate). **An "Advanced Online" manuscript is published online prior to copyediting, formatting for publication and author proofreading, but is nonetheless fully citable through its Digital Object Identifier (doi®). Nevertheless, this "Advanced Online" version is NOT the final version of the manuscript.** When the final version of this paper is published within a definitive issue of the journal with copyediting, full pagination, etc., the final version will be accessible through the same doi and this "Advanced Online" version of the paper will disappear.

SUPPLEMENTAL DATA

Clinicopathological factors of ovarian clear cell carcinoma: A single institutional analysis of 247 cases in China

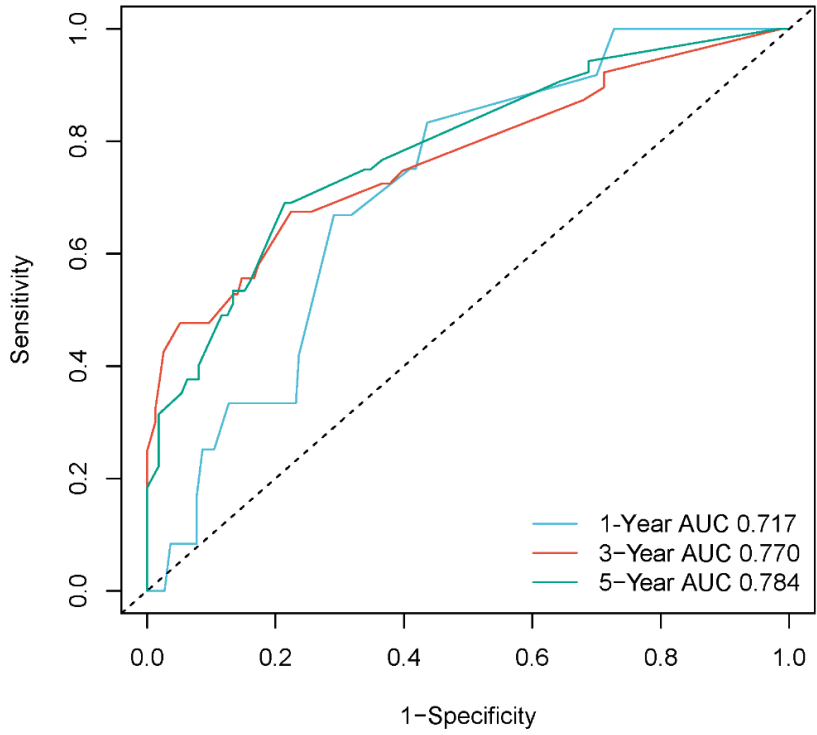
Table S1. Univariate and multivariate Cox regression analyses of factors associated with OCCC prognosis.

Characteristics	Total(N)	Univariate analysis		Multivariate analysis	
		Hazard ratio (95% CI)	P value	Hazard ratio (95% CI)	P value
Differentiation	247				
unknown	157	Reference			
Poorly	79	1.468 (0.841-2.565)	0.177		
Moderately	7	0.467 (0.064-3.429)	0.454		
Highly	4	2.785 (0.667-11.638)	0.160		
Neoadjuvant	247				
no	219	Reference		Reference	
yes	28	2.247 (1.130-4.469)	0.021	0.434 (0.169-1.115)	0.083
Maximum diameter of the mass	247				
≤5cm	70	Reference			
5-10cm	80	0.882 (0.459-1.697)	0.707		
≥10cm	97	0.841 (0.444-1.593)	0.596		

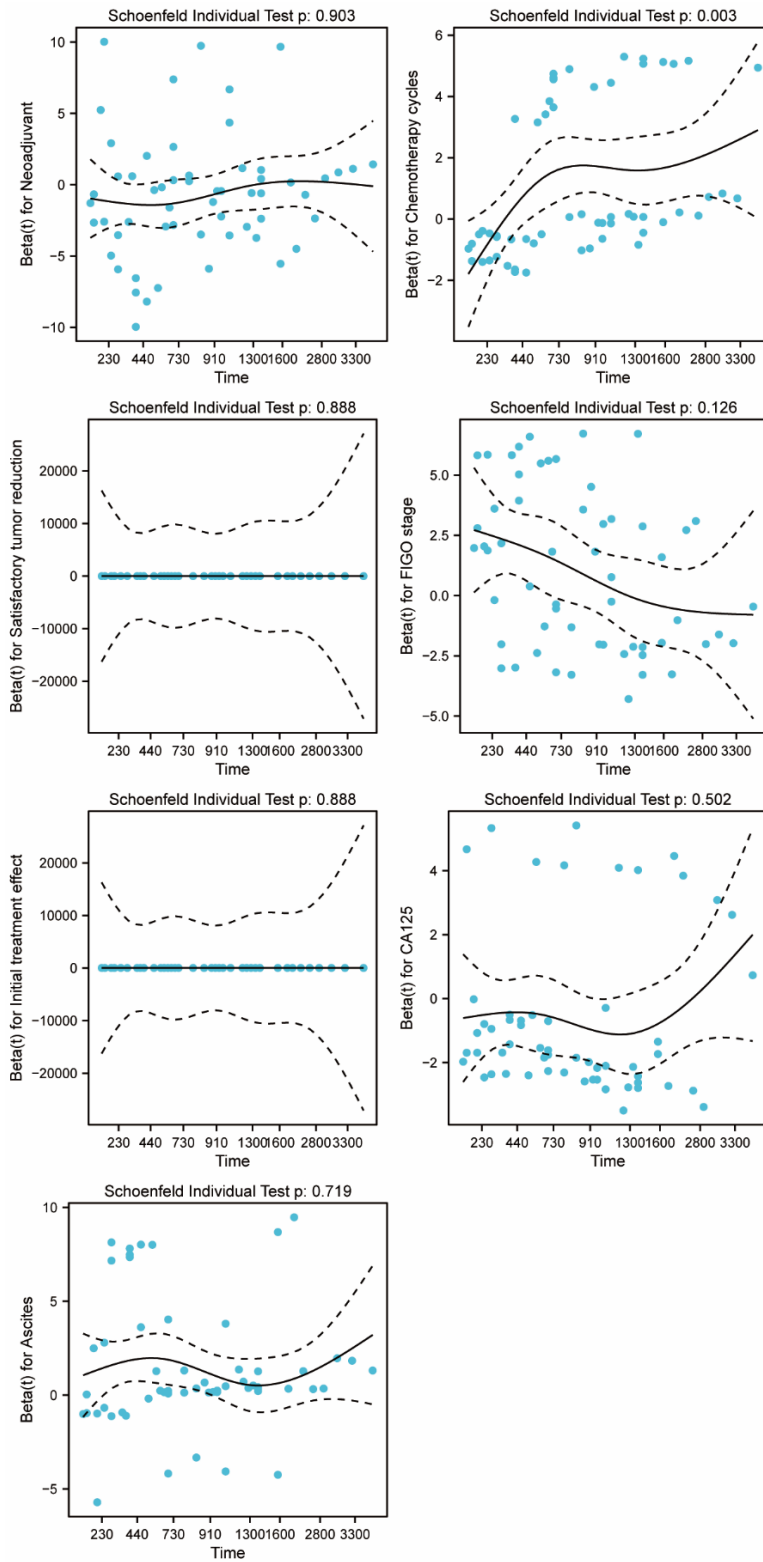
Endometriosis	247				
no	231	Reference			
yes	16	1.517 (0.604-3.806)	0.375		
Ascites	247				
no	222	Reference		Reference	
yes	25	4.393 (2.386-8.089)	< 0.001	3.985 (1.830-8.676)	< 0.001
CA125	247				
≤35	86	Reference		Reference	
>35	161	2.533 (1.309-4.899)	0.006	1.915 (0.949-3.864)	0.070
FIGO stage	247				
I	145	Reference		Reference	
II	41	1.704 (0.807-3.599)	0.162	1.475 (0.679-3.204)	0.326
III	47	3.874 (2.108-7.119)	< 0.001	2.093 (0.916-4.780)	0.080
IV	14	2.867 (0.983-8.361)	0.054	2.131 (0.631-7.198)	0.223
Surgical approach	247				
Laparotomy	235	Reference			

Laparoscopy	12	0.687 (0.167-2.818)	0.602		
Satisfactory tumor reduction at first operation	247				
unsatisfactory	18	Reference		Reference	
satisfactory	229	0.296 (0.149-0.588)	< 0.001	0.354 (0.172-0.656)	< 0.001
Initial treatment effect	247				
CR	230	Reference		Reference	
PR	17	3.807 (1.912-7.583)	< 0.001	3.226(1.355-6.454)	< 0.001
Lymph node metastasis	247				
no	167	Reference		Reference	
yes	24	2.711 (1.285-5.723)	0.009	1.349 (0.564-3.228)	0.501
unknown	56	1.533 (0.845-2.781)	0.160	1.332 (0.653-2.717)	0.430
Chemotherapy cycles	247				
≤6 cycles	213	Reference		Reference	
>6 cycles	34	3.011 (1.699-5.335)	< 0.001	2.739 (1.492-5.030)	0.001

Time-dependent ROC Curve



A



B

Figure S1. (A) Receiver operating characteristic curves for the nomogram prediction models and area under the curve (AUC) for the 1-, 3-, and 5-year periods. (B) A plot of the proportion of risk for each predictor in the nomogram prediction model.