






## META-ANALYSIS

# Probiotics for the prevention of gestational diabetes mellitus: A meta-analysis of randomized controlled trials

Xue Li <sup>1</sup>, Luwen Zhang <sup>2</sup>, Yuanqi He <sup>1\*</sup>, Dandan Zhang <sup>1</sup>, and Shihong Zhang <sup>3</sup>

Changes in intestinal microbiota have been shown to be involved in the development of gestational diabetes mellitus (GDM). We performed a meta-analysis to systematically evaluate the potential role of probiotics in the prevention of GDM. A systematic literature search was performed in electronic databases, including PubMed, Cochrane Library, Embase, Web of Science, Wanfang, and China National Knowledge Infrastructure (CNKI) to obtain relevant randomized controlled studies. A random-effects model was used to pool the results by incorporating the impact of the potential heterogeneity. Meta-regression and subgroup analyses were conducted to evaluate the source of heterogeneity. Fourteen studies involving 3527 pregnant women were included. Results showed that probiotics significantly reduced the incidence of GDM as compared to control (risk ratio [RR]: 0.71, 95% confidence interval [CI]: 0.52–0.96,  $P = 0.03$ ) with significant heterogeneity ( $I^2 = 73\%$ ). The meta-regression showed that the body mass index (BMI) of women was positively associated with the RR for the effect of probiotics on GDM (coefficient = 0.084,  $P = 0.01$ ). The results of subgroup analyses also suggested that probiotics significantly reduced the risk of GDM in women with BMI < 26 kg/m<sup>2</sup>, but not in those with BMI  $\geq 26$  kg/m<sup>2</sup> ( $P$  for subgroup difference = 0.001). In addition, the preventative efficacy of probiotics on GDM was remarkable in women < 30 years, but not in those  $\geq 30$  years ( $P$  for subgroup difference < 0.001). In conclusion, probiotics may be effective in reducing the risk of GDM, particularly for women with lower BMI and younger age.

**Keywords:** Gestational diabetes mellitus (GDM), probiotics, prevention, incidence, meta-analysis.

## Introduction

Gestational diabetes mellitus (GDM) is a prevalent metabolic disorder that occurs during pregnancy [1, 2]. Existing literature suggests that the prevalence of GDM among pregnant individuals ranges from 15% to 20% [1]. Risk factors associated with GDM include advanced maternal age, elevated body mass index (BMI), familial history of type 2 diabetes mellitus (T2DM), and a prior history of GDM in a previous pregnancy [3]. Emerging research indicates that GDM is not only linked to immediate adverse outcomes, such as miscarriage, preterm birth, and macrosomia [4, 5], but it is also associated with a range of long-term health risks for both mothers and their offspring, including maternal and child obesity, increased risk of type 2 diabetes, and heightened maternal susceptibility to cancer and cardiovascular diseases [4, 6, 7]. Consequently, there is a pressing need for the development of innovative approaches to prevent the onset of GDM [8].

Pregnancy has been associated with disruptions in the homeostasis of intestinal microbiota, with a notable increase in actinobacteria and proteobacteria observed in 60%–70% of women [9, 10]. Studies have shown that women with GDM exhibit more pronounced alterations in gut microbiota compared to those without GDM, resembling patterns seen in

non-pregnant women with T2DM [11, 12]. This suggests a potential role of gut microbiota in the development of GDM. Probiotics, as living microorganisms, play a beneficial role in restoring and maintaining the balance of gut microbiota composition [13]. In T2DM patients, the use of probiotics has been linked to a reduction in insulin resistance and enhancement of glycemic control [14, 15]. Furthermore, in females with a confirmed diagnosis of GDM, supplementation with probiotics has demonstrated improvements in hyperglycemia and dyslipidemia, as well as a decrease in the birth weight of their offspring [16–18]. Similarly, probiotics supplementation has been suggested to improve glycemic control via multiple mechanisms, such as reducing inflammation, enhancing the production of short-chain fatty acids (SCFAs), regulation of gut microbiota, improving insulin sensitivity, and preventing excessive weight gain [19, 20]. However, conflicting findings arise from previous studies examining the efficacy of probiotics in preventing GDM [21]. Two meta-analyses conducted previously did not find significant evidence to support the use of probiotics in reducing the risk of GDM [22, 23]. However, they included only five to six studies and significant heterogeneity, which were not explored due to the limited number of available studies, was observed in both [22, 23]. Additional

<sup>1</sup>Department of Obstetrics, Weihai Municipal Hospital, Cheeloo College of Medicine, Shandong University, Weihai, China; <sup>2</sup>Department of Obstetrics, The First Affiliated Hospital of Jinan University, Guangzhou, China; <sup>3</sup>Department of Gynaecology and Obstetrics, Weihai Municipal Hospital, Cheeloo College of Medicine, Shandong University, Weihai, China.

\*Correspondence to Yuanqi He: [snowli2023@hotmail.com](mailto:snowli2023@hotmail.com)

DOI: 10.17305/bb.2024.10377

© 2024 Li et al. This article is available under a Creative Commons License (Attribution 4.0 International, as described at <https://creativecommons.org/licenses/by/4.0/>).

randomized controlled trials have been published since [24–29]. Accordingly, the aim of our study was to perform an updated meta-analysis to comprehensively evaluate the influence of probiotics supplementation on the incidence of GDM in pregnant women.

## Materials and methods

This study is in accordance with the guidelines of Preferred reporting items for systematic reviews and meta-analyses (PRISMA) [30, 31] and the Cochrane Handbook [32].

### Study inclusion and exclusion criteria

The principle of PICOS, which is explained below, was utilized to determine the inclusion criteria for the meta-analysis.

**P** (participants): Women planning to conceive or at early pregnancy; **I** (intervention): Probiotics supplements during pregnancy, with no restrictions to the strains, timing, or dose of probiotics; **C** (control): Placebo or no additional treatment; **O** (outcomes): Reported the incidence of GDM during follow-up. The methods and criteria for the diagnosis of GDM were in accordance with those reported in the original studies. **S** (study design): Only RCTs with parallel groups that were published as complete articles in English or Chinese in peer-reviewed journals were deemed eligible for study design. Non-randomized studies, studies not including women planning to conceive or at early pregnancy, not with an intervention of probiotic supplementation, or not reporting the outcome of GDM incidence were excluded. In case studies with potentially overlapping patient populations were found, the meta-analysis included the one that had the larger sample size.

### Literature search strategy

To identify studies in Medline (PubMed), CENTER (Cochrane Library), Embase (Ovid), Web of Science, Wanfang, and China National Knowledge Infrastructure (CNKI), a search strategy was employed that encompassed the following criteria by a combination of the keywords: (1) “probiotic” OR “probiotics” OR “lactobacillus” OR “lactobacilli” OR “bifidobacteria” OR “bifidobacterium”; (2) “gestational diabetes mellitus” OR “GDM” OR [(“gestational” OR “pregnancy” OR “pregnant”) AND (“diabetes” OR “diabetic” OR “hyperglycemia”)]; and (3) “random” OR “randomized” OR “randomized” OR “randomly” OR “allocated” OR “control” OR “placebo.” Our focus was solely on research that involved human participants. In addition, we conducted a manual search for references to relevant reviews and primary articles. The most recent database search was conducted on December 21, 2023.

### Extraction of data and assessment of study quality

Two authors conducted separate searches in databases, gathered information, and assessed the quality. In case of any disagreements, the corresponding author was consulted to reach a consensus. For the study, various data were gathered including general details, characteristics of the study design, participant characteristics, age, BMI, proportions of women with primipara, use of lifestyle recommendations (diet and exercise), details of interventions (probiotics used, timing, and dose),

regimens of controls, and criteria for the diagnosis of GDM. Cochrane’s Risk of Bias Tool [32] was used to evaluate the quality of RCTs included in this review. It assessed seven domains, including the generation of random sequence, concealment of allocations, blinding of participants and personnel, blinding of outcome evaluation, incomplete result data, and selective reporting of outcomes.

### Statistical analysis

The incidence of GDM, compared between women with probiotics supplementation and women in the control group, was summarized as risk ratio (RR) and corresponding 95% confidence interval (CI). The outcome data was extracted using the intention-to-treat principle. The Cochrane Q test was used to investigate the heterogeneity among the included studies [32]. Furthermore, the  $I^2$  statistic was calculated, where  $I^2 > 50\%$  suggested statistical heterogeneity [33]. To incorporate potential heterogeneity, a random-effect model was employed for pooling the data [32]. For outcomes of adequate datasets (10 or above), meta-regression and subgroup analyses according to study characteristics were performed to evaluate the source of heterogeneity. The meta-regression analysis tested the significance of the individual study characteristics’ influence on the results of the meta-analysis, with a  $P$  value  $< 0.05$  indicating a significant modification effect. A positive coefficient demonstrated that the evaluated study characteristics are positively related to the OR of the results, while a negative coefficient demonstrated that the evaluated study characteristics are negatively related to the OR of the results. These characteristics included study country, mean age, BMI, timing, and dose of probiotics supplementation, and the risk of GDM of the studied females as reflected by the incidence of GDM in the control groups. Medians of continuous variables were selected as the cutoffs to define the subgroups. Publication bias was evaluated using Egger’s test for regression asymmetry and funnel plots [34]. A  $P$  value  $< 0.05$  suggested a statistically significant distinction. The statistical analysis was conducted using RevMan (Version 5.1; Cochrane, Oxford, UK) and Stata (Version 12.0; Stata Corporation, USA) software.

## Results

### Literature search

The process of acquiring literature is illustrated in Figure 1. In summary, a total of 719 articles were obtained through database searches, with 530 remaining after removing duplicates. A total of 494 articles were subsequently excluded by screening via titles and abstracts, primarily because they were not relevant to the objective of the study. After reading the full text, an additional 22 articles out of the initial 36 were excluded due to the reasons outlined in Figure 1. At last, 14 RCTs [24–29, 35–42] were available for the subsequent meta-analysis.

### Study characteristics and data quality evaluation

Table 1 provides a summary of the studies included in the meta-analysis. In total, there were 14 RCTs involving 3527 females who were planning to conceive in the upcoming six months or at early pregnancy [24–29, 35–42]. These studies

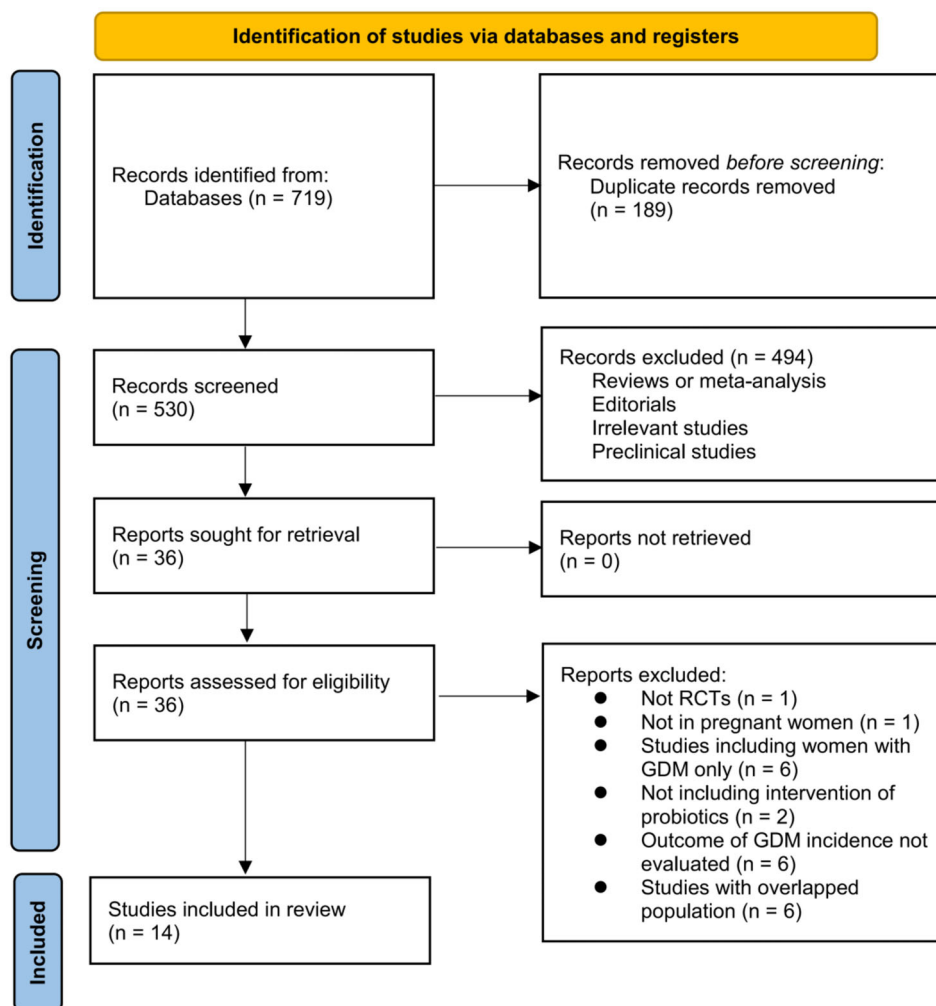


Figure 1. Flowchart of the literature search. GDM: Gestational diabetes mellitus.

were published between 2010 and 2022 and carried out in Finland, Ireland, New Zealand, Australia, China, Denmark, Iran, the United Kingdom, Singapore, and Pakistan. The mean ages of the females were 27–34 years, and the mean BMI scores were 21–39 kg/m<sup>2</sup>. The proportions of females with primipara varied between 15.0%–63.5%. In four studies, dietary recommendation was also provided to females of the intervention and control groups [25, 35, 36, 41]. However, no evaluation has been performed regarding the diet or physical activities pre- and post-intervention among these studies. Multiple different strains were used for probiotics supplementation, such as *Lactobacillus rhamnosus*, *Lactobacillus acidophilus*, *Lactobacillus salivarius*, *Bifidobacterium lactis*, *Bifidobacterium longum*, *Bifidobacterium bifidum*, *Lactobacillus casei*, *Lactobacillus bulgaricus*, *Lactobacillus plantarum*, *Lactobacillus paracasei*, *Bifidobacterium breve*, *Bifidobacterium infantis*, and *Streptococcus thermophilus*, with *Lactobacillus rhamnosus* GG as the most commonly used probiotics strain. Most of the included studies used multiple strains as intervention except for three studies [36–38], in which single-strain probiotics were used. The timing for the starting of probiotics supplementation varied among the included studies, ranging from within the first trimester to the

gestational age (GA) of 24 weeks. The total doses of probiotics were 1–50 × 10<sup>9</sup> colony-forming units per day. As for the controls, placebo capsules were used in 12 studies [26–29, 35–42], while for the other two studies, no additional treatment was considered as controls [24, 25]. The incidence of GDM was diagnosed with the International Association of Diabetes in Pregnancy Study Group criteria [43] in all the studies using a “one-step” 2-h 75 g oral glucose tolerance test (OGTT) except for one study [36], in which GDM was diagnosed with the American College of Obstetricians and Gynecologists criteria using a “two-step” 3-h 100 g OGTT test [44]. Compliance data were reported in three studies, with similar mean adherence rates of 94.5% [37], 88.4% [40], and >90% [38] between females of the intervention and control groups, indicating good compliance. The incidence of adverse events was reported in two studies [26, 40]. Only mild discomfort related to the treatments was reported, which was similar in females in the intervention and control groups, with gastrointestinal symptoms being the most common symptoms.

Table 2 provides a detailed analysis of the included RCTs using Cochrane’s Risk of Bias Tool. One of the included studies was open-label [25], another one was single-blinded [24], while

Table 1. Characteristics of the included studies

Study	Location	Design	Participants	Patient number	Mean age (years)	Mean BMI (kg/m <sup>2</sup> )	Primipara (%)	Lifestyle recommendations	Timing of intervention	Intervention	Total dose (10 <sup>9</sup> cfu/d)	Control	GDM diagnosis
Luoto, 2010	Finland	R, DB, PC	Women at early pregnancy with no chronic metabolic diseases	152	29.9	23.6	57.9	Diet only	First trimester to delivery	<i>Lactobacillus rhamnosus</i> GG and <i>Bifidobacterium lactis</i> Bb12	20	Placebo capsule	IADPSG criteria
Lindsay, 2014	Ireland	R, DB, PC	Obese women at early pregnancy	138	31.2	33.6	44.9	Diet only	Second trimester (GA: 24 weeks) to delivery	<i>Lactobacillus salivarius</i> UCC118	1	Placebo capsule	ACOG criteria
Wickens, 2017	New Zealand	R, DB, PC	Pregnant women with a personal or partner history of atopic disease at early pregnancy	373	34	25.5	NR	NR	Second trimester (GA: 14~16 weeks) to delivery	<i>Lactobacillus rhamnosus</i> HN001	6	Placebo capsule	IADPSG criteria
Okesene, 2019	New Zealand	R, DB, PC	Women at early pregnancy with BMI > 30 kg/m <sup>2</sup>	230	28.7	38.6	31.7	No dietary recommendation	Second trimester (GA: 13~17 weeks) to delivery	<i>Lactobacillus rhamnosus</i> GG and <i>Bifidobacterium lactis</i> Bb12	6.5	Placebo capsule	IADPSG criteria
Pellonpera, 2019	Finland	R, DB, PC	Women at early pregnancy with BMI > 25 kg/m <sup>2</sup>	190	30.6	29.8	47.9	No dietary recommendation	Second trimester (GA: 18 weeks) to delivery	<i>Lactobacillus rhamnosus</i> HN001 and <i>Bifidobacterium animalis</i> ssp. <i>lactis</i> 420	20	Placebo capsule	IADPSG criteria
Callaway, 2019	Australia	R, DB, PC	Women at early pregnancy with BMI > 25 kg/m <sup>2</sup>	411	31.5	31.8	38.7	NR	Second trimester (GA: 20 weeks) to delivery	<i>Lactobacillus rhamnosus</i> GG and <i>Bifidobacterium lactis</i> Bb12	2	Placebo capsule	IADPSG criteria
Wang, 2019	China	R, SB	Women at early pregnancy	400	27.2	21.5	NR	NR	Second trimester (GA: 16 weeks) to delivery	<i>Lactobacillus rhamnosus</i> GG and <i>Bifidobacterium lactis</i> Bb12	2	No additional treatment	IADPSG criteria
Halkjar, 2020	Denmark	R, DB, PC	Obese women at early pregnancy	49	30.7	31.9	NR	NR	Second trimester (GA: 14~20 weeks) to delivery	<i>Streptococcus thermophilus</i> DSM 24,731, <i>bifidobacteria</i> and <i>lactobacilli</i>	45	Placebo capsule	IADPSG criteria
Cao, 2020	China	R, OL	Women at early pregnancy	100	33.8	23.6	50%	Diet only	Second trimester (GA: 13~14 weeks) to delivery	<i>Lactobacillus rhamnosus</i> GG and HN001, <i>Limosilactobacillus reuteri</i> CECT5716, <i>Bifidobacterium animalis</i> ssp. <i>lactis</i> HN019	15	No additional treatment	IADPSG criteria

(Continued)

Table 1. Continued

Study	Location	Design	Participants	Patient number	Mean age (years)	Mean BMI (kg/m <sup>2</sup> )	Primipara (%)	Lifestyle recommendations	Timing of intervention	Intervention	Total dose (10 <sup>9</sup> cfu/d)	Control	GDM diagnosis
Asgharian, 2020	Iran	R, DB, PC	Women at early pregnancy with BMI > 25 kg/m <sup>2</sup>	128	29.5	29.8	15%	Diet only	Second trimester (GA: 24 weeks) to delivery	<i>Lactobacillus acidophilus</i> La5 and <i>Bifidobacterium lactis</i> Bb12	50	Placebo yoghurts	IADPSG criteria
Shahriari, 2021	Iran	R, DB, PC	Women at early pregnancy with high risk for GDM	507	32	30.2	NR	No dietary counseling	Second trimester (GA: 14 weeks) to delivery	<i>Lactobacillus acidophilus</i> LA1, <i>Bifidobacterium longum</i> sp54 cs, and <i>Bifidobacterium bifidum</i> sp9 cs	15	Placebo capsule	IADPSG criteria
Godfrey, 2021	United Kingdom, Singapore, and New Zealand	R, DB, PC	Women planning to conceive in upcoming 6 months	577	30.3	25.7	63.5	NR	Before pregnancy to delivery	<i>Lactobacillus rhamnosus</i> NCC 4007 and <i>Bifidobacterium animalis</i> subspecies lactis NCC 2818	2	Placebo capsule	IADPSG criteria
Baloch, 2022	Pakistan	R, DB, PC	Women at early pregnancy with high risk for GDM	160	30	26	NR	NR	Second trimester (GA: 13~14 weeks) to delivery	<i>Streptococcus</i> , bifidobacteria and lactobacilli	5	Placebo capsule	IADPSG criteria
Liu, 2022	China	R, DB, PC	Women at early pregnancy	112	29.7	22.6	NR	NR	Second trimester (GA: 20 weeks) to delivery	<i>Streptococcus</i> , bifidobacteria and lactobacilli	12	Placebo capsule	IADPSG criteria

BMI: Body mass index; cfu: Colony-forming unit; GDM: Gestational diabetes mellitus; R: Randomized; DB: Double-blinded; PC: Placebo-controlled; OL: Open-label; SB: Single-blinded; GA: Gestational age; IADPSG: The International Association of Diabetes in Pregnancy Study Group; ACOG: The American College of Obstetricians and Gynecologists; NR: Not reported.



Table 2. Study quality evaluation via the Cochrane’s Risk of Bias Tool

Study	Random sequence generation	Allocation concealment	Blinding of participants	Blinding of outcome assessment	Incomplete outcome data addressed	Selective reporting	Other sources of bias
Luoto, 2010	Unclear	Unclear	Low risk	Low risk	Low risk	Low risk	Low risk
Lindsay, 2014	Low risk	Low risk	Low risk	Low risk	Low risk	Low risk	Low risk
Wickens, 2017	Low risk	Unclear	Low risk	Low risk	Low risk	Low risk	Low risk
Okesene, 2019	Low risk	Low risk	Low risk	Low risk	Low risk	Low risk	Low risk
Pellonpera, 2019	Low risk	Low risk	Low risk	Low risk	Low risk	Low risk	Low risk
Callaway, 2019	Low risk	Low risk	Low risk	Low risk	Low risk	Low risk	Low risk
Wang, 2019	Unclear	Unclear	High risk	Low risk	Low risk	Low risk	Low risk
Halkjar, 2020	Low risk	Low risk	Low risk	Low risk	Low risk	Low risk	Low risk
Cao, 2020	Unclear	Unclear	High risk	High risk	Low risk	Low risk	Low risk
Asgharian, 2020	Low risk	Low risk	Low risk	Low risk	Low risk	Low risk	Low risk
Shahriari, 2021	Low risk	Low risk	Low risk	Low risk	Low risk	Low risk	Low risk
Godfrey, 2021	Low risk	Unclear	Low risk	Low risk	Low risk	Low risk	Low risk
Baloch, 2022	Unclear	Unclear	Low risk	Low risk	Low risk	Low risk	Low risk
Liu, 2022	Unclear	Unclear	Low risk	Low risk	Low risk	Low risk	Low risk

the remaining 12 studies were double-blinded [26–29, 35–42]. The details of the random sequence generation were reported in nine studies [26, 27, 36–42], and seven studies reported the details of allocation concealment [27, 36, 38–42].

#### Influence of probiotics on the incidence of GDM

Pooled results of 14 studies using random-effects models showed that probiotics significantly reduced the incidence of GDM as compared to control (RR: 0.71, 95% CI: 0.52–0.96,  $P = 0.03$ ; Figure 2A) with significant heterogeneity ( $I^2 = 73%$ ). Sensitivity analysis by excluding the study with ACOG criteria [36] for the diagnosis of GDM retrieved similar results (RR: 0.70, 95% CI: 0.51–0.95,  $P = 0.02$ ;  $I^2 = 75%$ ). In addition, a sensitivity analysis excluding the two studies with probiotics started at the 24 weeks of GA [36, 41] also showed similar results (RR: 0.71, 95% CI: 0.51–0.98,  $P = 0.04$ ;  $I^2 = 76%$ ).

The meta-regression showed that the females’ mean BMI was positively associated with the RR for the effect of probiotics on GDM (coefficient = 0.084,  $P = 0.01$ ; Figure 2B and Table 3), which largely explained the source of between-study heterogeneity (residual  $I^2 = 10.5%$ ). Other variables such as sample size, mean age, probiotics dose, median GA for starting probiotics, or incidence of GDM in control groups were not suggested to be significant modifiers for the effect of probiotics on GDM, according to the results of the meta-regression analyses ( $P$  all > 0.05, Table 3).

Subsequent subgroup analyses according to the study country did not significantly affect the results ( $P$  for subgroup difference = 0.09; Figure 3A). However, the results of subgroup analyses indicated that the preventative efficacy of probiotics on GDM was remarkable in females < 30 years, but not in those  $\geq 30$  years (RR: 0.42 vs 1.05,  $P$  for subgroup difference < 0.001; Figure 3B). In addition, it was also indicated

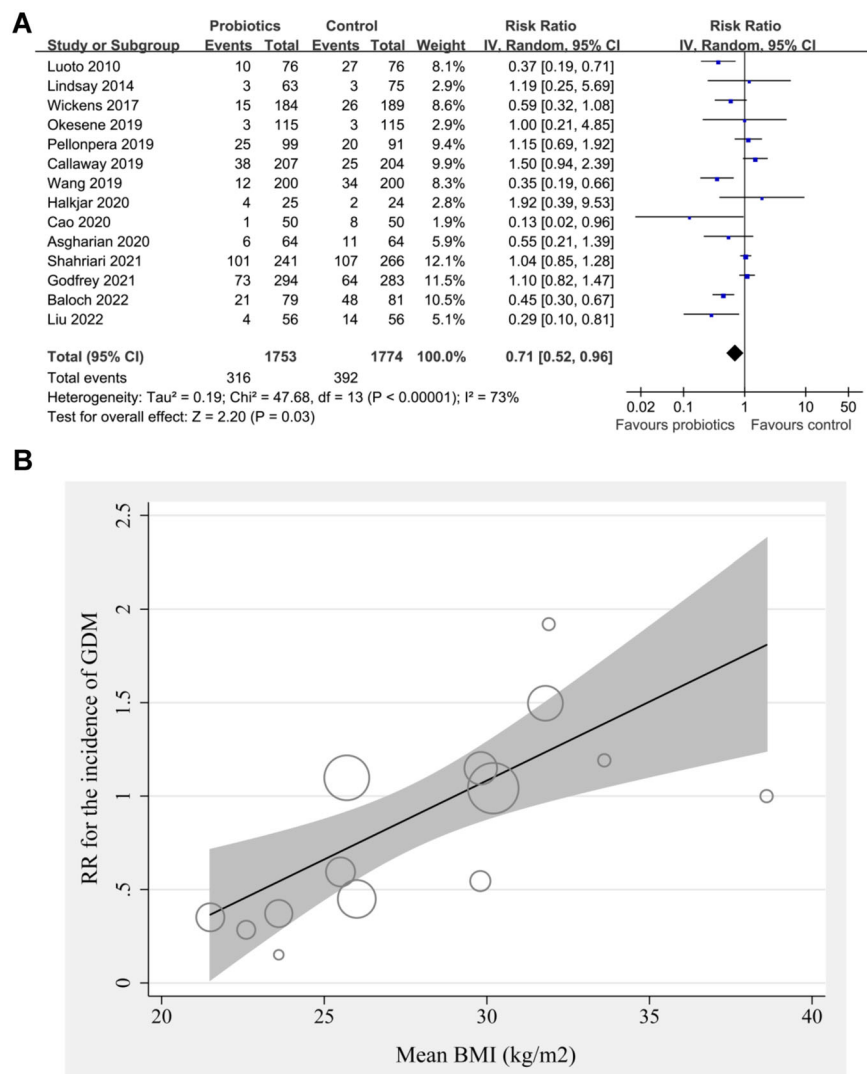
that probiotics significantly reduced the risk of GDM in females with BMI < 26 kg/m<sup>2</sup>, but not in those with BMI  $\geq 26$  kg/m<sup>2</sup> ( $P$  for subgroup difference = 0.001; Figure 4A). Subgroup analyses did not support that other study characteristics could significantly influence the effect of probiotics supplementation on the risk of GDM, such as probiotics dose ( $P$  for subgroup difference = 0.70; Figure 4B), timing of probiotic supplementation ( $P$  for subgroup difference = 0.53; Figure 5A), or risk of GDM as reflected by the incidence of GDM in controls ( $P$  for subgroup difference = 0.97; Figure 5B).

#### Publication bias

The funnel plots for the meta-analysis of the probiotics’ influence on the incidence of GDM in pregnant women are shown in Figure 6. The funnel plots are symmetrical on visual inspection, suggesting the low risk of publication bias. The results of Egger’s regression test also suggested a low risk of publication bias ( $P = 0.39$ ).

## Discussion

In our study, by pooling the results of 14 RCTs, we found that probiotics supplementation during pregnancy could significantly reduce the incidence of GDM. Interestingly, subsequent meta-regression and subgroup analyses suggested that the BMI of the pregnant females may significantly modify the effect of probiotics on GDM, which largely explained the source of heterogeneity. Specifically, probiotics significantly reduced the risk of GDM in women with BMI < 26 kg/m<sup>2</sup>, but not in those with BMI  $\geq 26$  kg/m<sup>2</sup>. In addition, the preventative efficacy of probiotics on GDM was remarkable in women < 30 years, but not in those  $\geq 30$  years. Taken together, the results of this meta-analysis indicate that probiotics may be effective in



**Figure 2. Meta-analysis for the role of probiotics on the incidence of GDM in pregnant women.** (A) Forest plots for the overall meta-analysis of the influence of probiotics on the incidence of GDM; (B) Univariate regression analysis for the influence of BMI on the efficacy of probiotics for the prevention of GDM. RR: Risk ratio; CI: Confidence interval; GDM: Gestational diabetes mellitus; BMI: Body mass index; IV: Inverse variance.

**Table 3. Results of univariate meta-regression analysis**

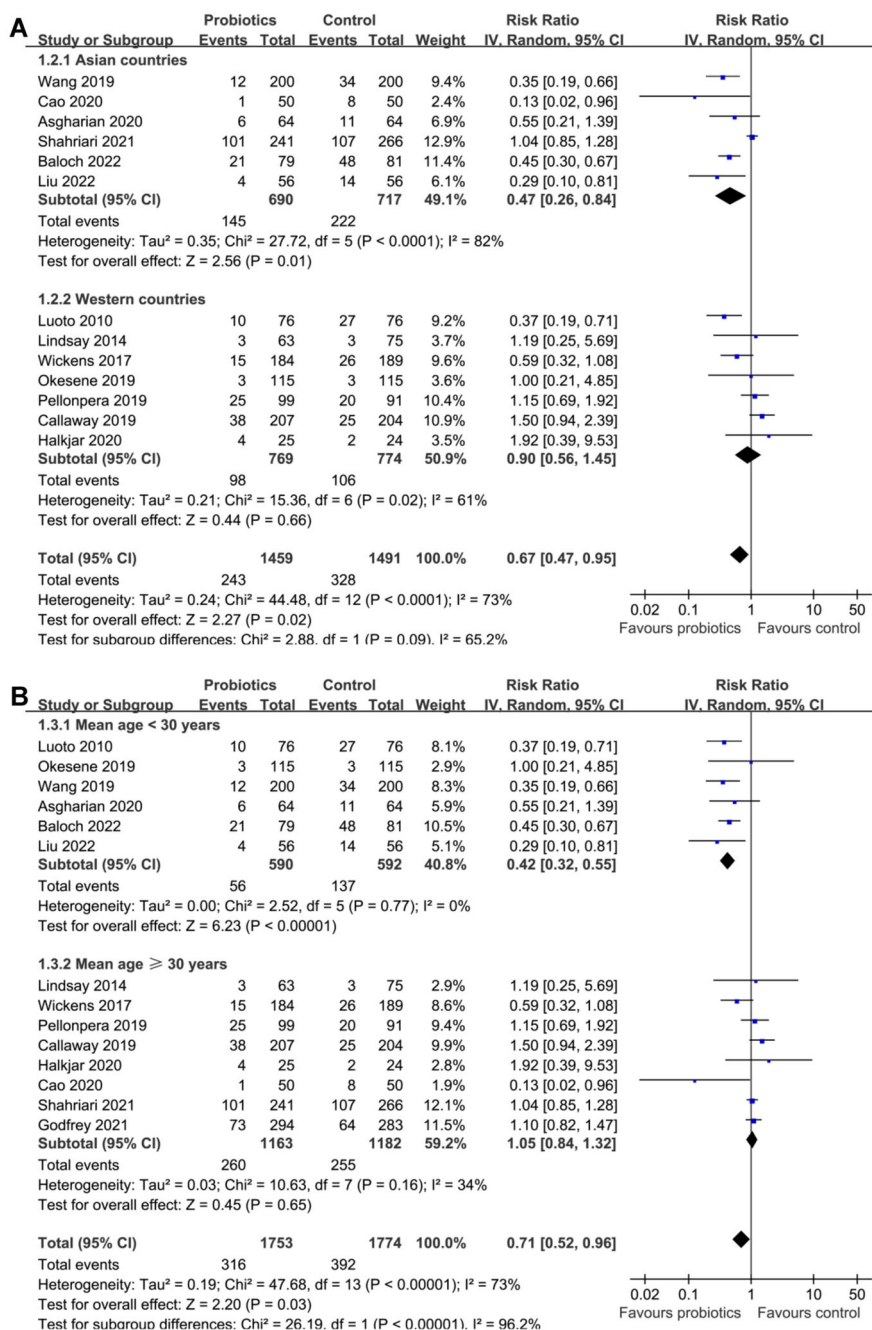
Variables	RR for the incidence of GDM			
	Coefficient	95% CI	P values	I <sup>2</sup> residual
Sample size	0.0010	0.0004–0.0024	0.15	35.2%
Mean age (years)	0.082	–0.081–0.244	0.30	45.6%
BMI (kg/m <sup>2</sup> )	0.084	0.025–0.144	0.01	10.5%
Dose of probiotics (10 <sup>9</sup> cfu/d)	–0.00057	–0.02342–0.02227	0.96	53.0%
Median GA for starting probiotics	0.0048	–0.0398–0.0495	0.82	53.1%
Incidence of GDM in control group (%)	–0.010	–0.027–0.007	0.23	46.3%

RR: Risk ratio; GDM: Gestational diabetes mellitus; CI: Confidence interval; BMI: Body mass index; cfu: Colony-forming unit; GA: Gestational age.

reducing the risk of GDM, particularly for females with lower BMI and younger age.

Although several meta-analyses have been published on the topic of the influence of probiotics supplementation on the risk

of GDM [22, 23], this current updated meta-analysis has several methodological strengths compared to the previous ones. First, in this meta-analysis, we performed an extensive literature search in six commonly used electronic databases, and



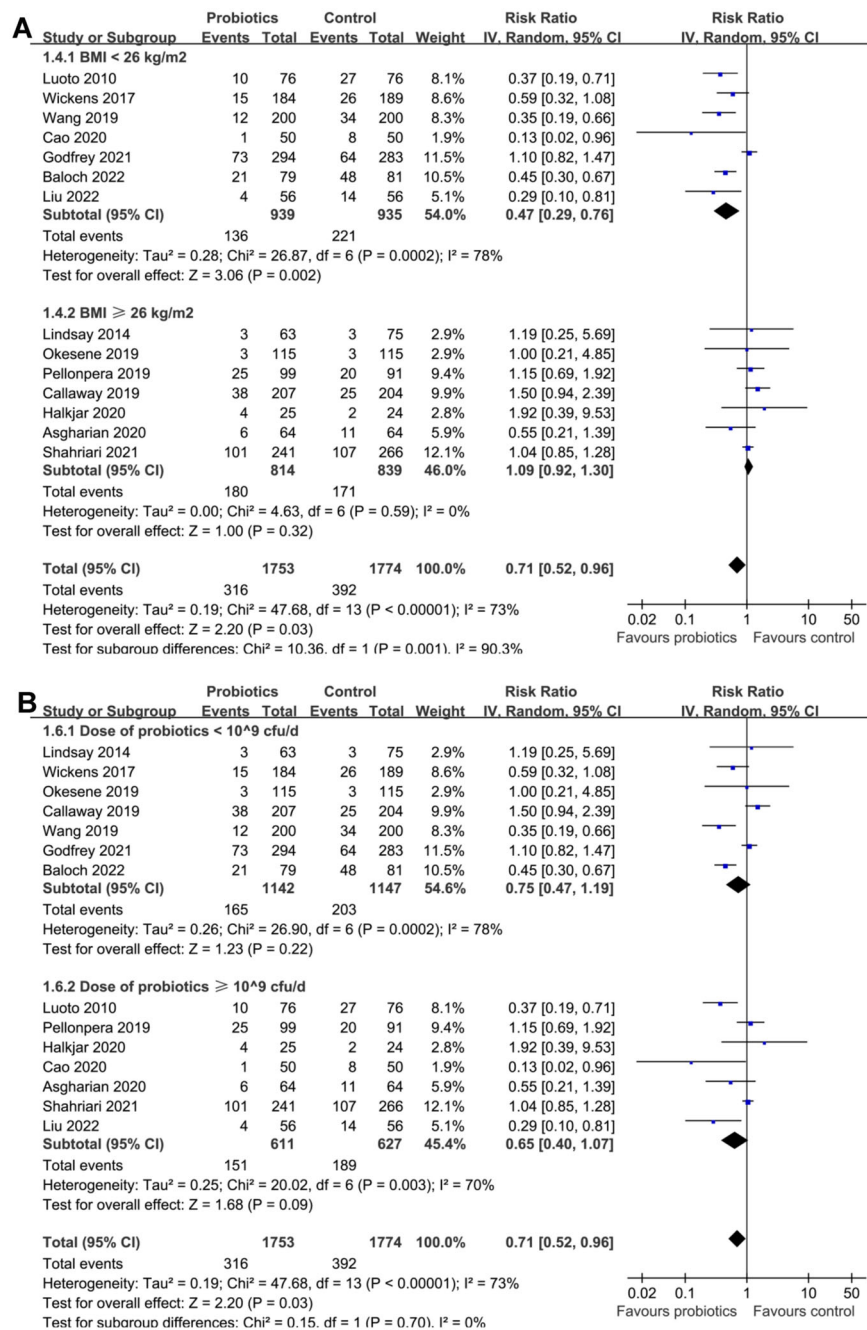
**Figure 3.** Forest plots for the subgroup analyses of the efficacy of probiotics for the prevention of GDM. (A) Subgroup analysis based on country and (B) based on mean ages. GDM: Gestational diabetes mellitus; CI: Confidence interval; IV: Inverse variance.

retrieved eligible RCTs which investigated the efficacy of probiotics for the prevention of GDM. As a result, 14 studies involving 3527 pregnant females were included. The overall sample size of the meta-analysis is much larger than that of the previous ones [22, 23]. In addition, multiple meta-regression and subgroup analyses were performed to identify the study characteristics' influences on the outcome and to determine the source of heterogeneity.

We found that the BMI of the females was positively associated with the RR of the probiotic's effect on GDM, and probiotics significantly reduced the risk of GDM in females with

BMI < 26 kg/m<sup>2</sup>, but not in those with BMI ≥ 26 kg/m<sup>2</sup>. Similarly, the preventative efficacy of probiotics on GDM was remarkable in women < 30 years, but not in those ≥ 30 years. The mechanisms underlying these findings remain to be determined. Interestingly, it has been confirmed that advanced maternal age [45] and obesity [46] are established risk factors for GDM. Therefore, the findings of this study may suggest that probiotics supplementation is effective in reducing the risk of GDM in low-risk women, but not in high-risk women. Physiologically, the mechanisms underlying the effects of probiotics supplementation during pregnancy are to attenuate the

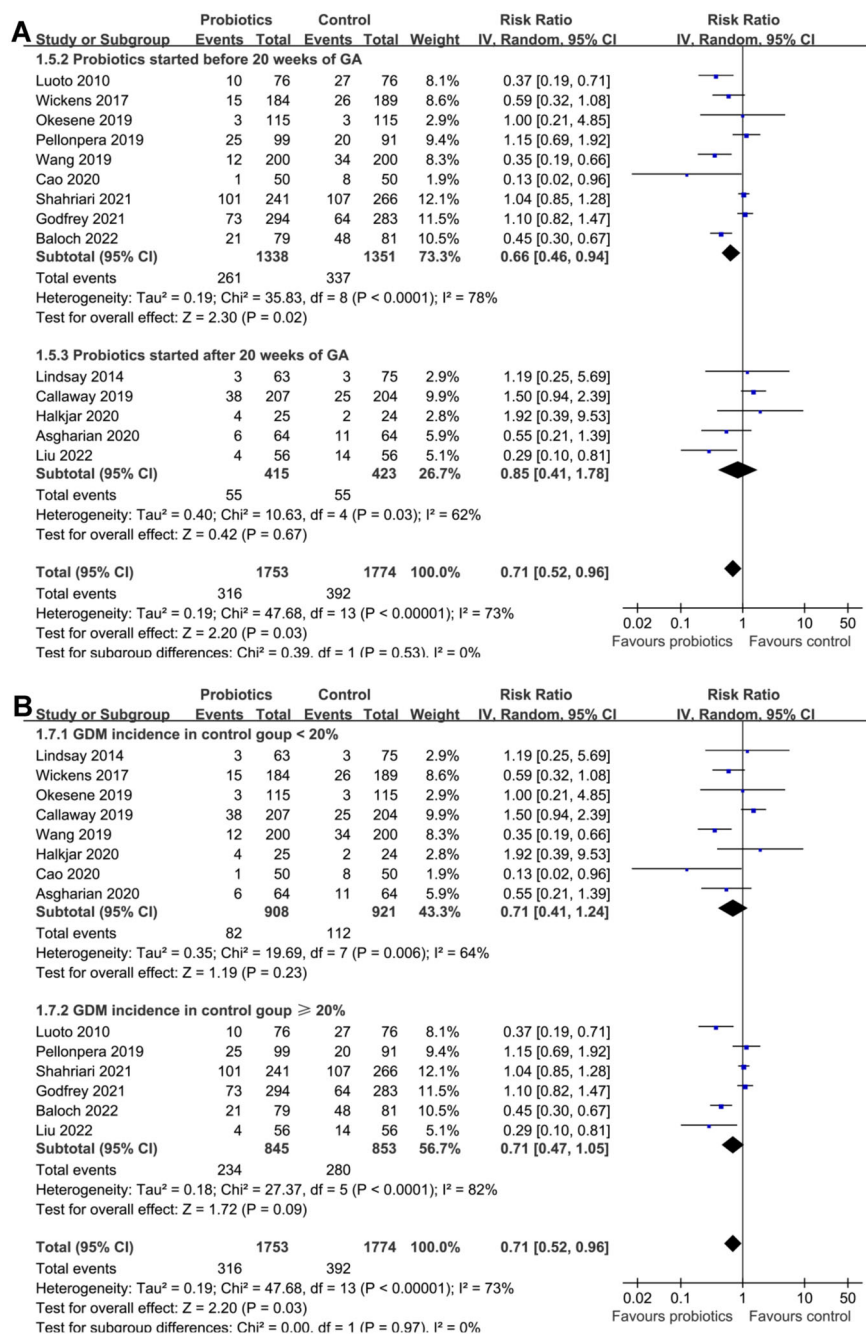




**Figure 4. Forest plots for the subgroup analyses of the efficacy of probiotics for the prevention of GDM.** (A) Subgroup analysis based the mean BMI of women and (B) subgroup analysis based on the probiotics dose. GDM: Gestational diabetes mellitus; BMI: Body mass index; CI: Confidence interval; cfu: Colony-forming unit; IV: Inverse variance.

gut dysbiosis related to pregnancy, a potential pathway linked to the pathogenesis of GDM [47]. For females with high risk for GDM, multiple mechanisms may be involved in the pathogenesis of GDM besides dysregulation of intestinal microbiota, such as islet beta-cell dysfunction, insulin resistance, neurohormonal dysregulation, oxidative stress, and inflammation [48], and probiotics supplementation may become less effective. In addition, a previous study suggested that multi-strain probiotics are beneficial for improved metabolic and inflammatory outcomes in post-GDM women by modulating gut dysbiosis,

which highlighted the necessity for a comprehensive strategy for postpartum treatment that includes probiotics to protect post-GDM women from developing glucose intolerance [49]. Accordingly, females with advanced age and obesity may respond poorly to probiotics because they have lesser gut microbial diversity. Moreover, a recent meta-analysis indicated that probiotics may have positive effects on metabolic, inflammation, oxidative stress, and neonatal outcomes in females with GDM. Additionally, diet and pre-intervention washout may modify the effects of probiotics [50]. These factors may also



**Figure 5. Forest plots for the subgroup analyses of the efficacy of probiotics for the prevention of GDM.** (A) Subgroup analysis based on the timing of probiotics supplementation and (B) based on the risk of GDM of the included women as reflected by the incidence of GDM in control groups. GDM: Gestational diabetes mellitus; CI: Confidence interval; GA: Gestational age; IV: Inverse variance.

confound the efficacy of probiotics in pregnant females with high risk for GDM. These hypotheses should be validated in future studies.

This meta-analysis has limitations. First, the species/strains of probiotics varied among the included studies, which may also lead to heterogeneity. Future studies should be performed to determine the optimal species/strains for the prevention of GDM. Second, although our meta-regression and subgroup analyses did not show that differences in dose or timing for

starting probiotics supplementation may modify the effect of probiotics for the prevention of GDM, the optimal dose and timing for starting probiotics remain to be clarified in this clinical setting. Third, the incidence of GDM could be significantly affected by dietary habits and physical activities [51], two key factors that may modify the potential preventative efficacy of probiotics on GDM. However, these two factors were rarely reported or controlled among the included studies. In addition, most of the studies did not evaluate the

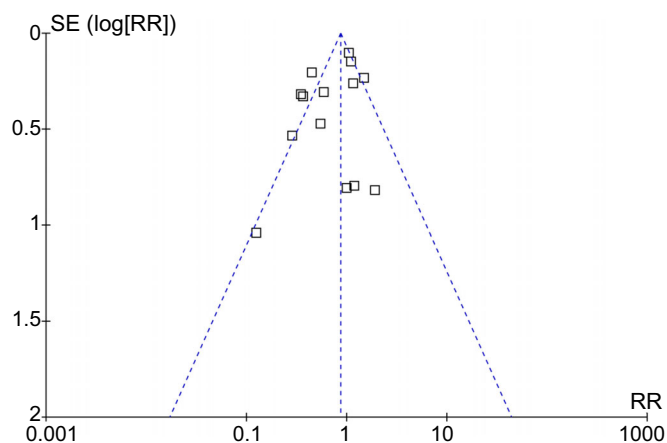


Figure 6. Funnel plots evaluating the publication bias of the meta-analysis for the role of probiotics on the incidence of GDM in pregnant women. GDM: Gestational diabetes mellitus; RR: Risk ratio.

baseline gut microbial diversity and did not observe the effect of probiotics on gut microbial diversity after intervention. Finally, this meta-analysis was based on study-level data rather than individual patient-level data. Accordingly, results of the meta-regression and subgroup analyses should be interpreted with caution. Large-scale RCTs are still needed to validate these findings.

## Conclusion

Taken together, probiotics supplementation may be effective in reducing the risk of GDM, particularly for females with lower BMI and young age. Although the optimal species/strains, dose, and starting timing of probiotics supplementation remain to be determined, these findings support the potential use of probiotics supplementation as an effective strategy to reduce the incidence of GDM in pregnant females. Further research is needed to evaluate the influence of probiotic supplementation on the risk of GDM in high-risk females, such as those with advanced age and obesity, especially high-quality RCTs.

**Conflicts of interest:** Authors declare no conflicts of interest.

**Funding:** Authors received no specific funding for this study.

**Data availability:** All data generated during the study are presented in the manuscript.

Submitted: 16 February 2024

Accepted: 6 April 2024

Published online: 19 April 2024

## References

- [1] Sweeting A, Wong J, Murphy HR, Ross GP. A clinical update on gestational diabetes mellitus. *Endocr Rev* 2022;43(5):763–93. <https://doi.org/10.1210/edrv/bnac003>.
- [2] Moon JH, Jang HC. Gestational diabetes mellitus: diagnostic approaches and maternal-offspring complications. *Diabetes Metab J* 2022;46(1):3–14. <https://doi.org/10.4093/dmj.2021.0335>.
- [3] Zhang C, Rawal S, Chong YS. Risk factors for gestational diabetes: is prevention possible? *Diabetologia* 2016;59(7):1385–90. <https://doi.org/10.1007/s00125-016-3979-3>.

- [4] Ye W, Luo C, Huang J, Li C, Liu Z, Liu F. Gestational diabetes mellitus and adverse pregnancy outcomes: systematic review and meta-analysis. *BMJ* 2022;377:e067946. <https://doi.org/10.1136/bmj-2021-067946>.
- [5] Bidhendi Yarandi R, Vaismoradi M, Panahi MH, Gare Kymre I, Behboudi-Gandevani S. Mild gestational diabetes and adverse pregnancy outcome: a systemic review and meta-analysis. *Front Med (Lausanne)* 2021;8:699412. <https://doi.org/10.3389/fmed.2021.699412>.
- [6] Wang Y, Yan P, Fu T, Yuan J, Yang G, Liu Y, et al. The association between gestational diabetes mellitus and cancer in women: a systematic review and meta-analysis of observational studies. *Diabetes Metab* 2020;46(6):461–71. <https://doi.org/10.1016/j.diabet.2020.02.003>.
- [7] Xie W, Wang Y, Xiao S, Qiu L, Yu Y, Zhang Z. Association of gestational diabetes mellitus with overall and type specific cardiovascular and cerebrovascular diseases: systematic review and meta-analysis. *BMJ* 2022;378:e070244. <https://doi.org/10.1136/bmj-2022-070244>.
- [8] Saravanan P. Gestational diabetes: opportunities for improving maternal and child health. *Lancet Diabetes Endocrinol* 2020;8(9):793–800. [https://doi.org/10.1016/S2213-8587\(20\)30161-3](https://doi.org/10.1016/S2213-8587(20)30161-3).
- [9] Koren O, Goodrich JK, Cullender TC, Spor A, Laitinen K, Backhed HK, et al. Host remodeling of the gut microbiome and metabolic changes during pregnancy. *Cell* 2012;150(3):470–80. <https://doi.org/10.1016/j.cell.2012.07.008>.
- [10] Di Simone N, Santamaria Ortiz A, Specchia M, Tersigni C, Villa P, Gasbarrini A, et al. Recent insights on the maternal microbiota: impact on pregnancy outcomes. *Front Immunol* 2020;11:528202. <https://doi.org/10.3389/fimmu.2020.528202>.
- [11] Mokkala K, Houttu N, Vahlberg T, Munukka E, Ronnema T, Laitinen K. Gut microbiota aberrations precede diagnosis of gestational diabetes mellitus. *Acta Diabetol* 2017;54(12):1147–9. <https://doi.org/10.1007/s00592-017-1056-0>.
- [12] Kunasegaran T, Balasubramaniam V, Arasoo VJT, Palanisamy UD, Ramadas A. The modulation of gut microbiota composition in the pathophysiology of gestational diabetes mellitus: a systematic review. *Biology (Basel)* 2021;10(10):1027. <https://doi.org/10.3390/biology10101027>.
- [13] Hill C, Guarner F, Reid G, Gibson GR, Merenstein DJ, Pot B, et al. Expert consensus document. The International Scientific Association for Probiotics and Prebiotics consensus statement on the scope and appropriate use of the term probiotic. *Nat Rev Gastroenterol Hepatol* 2014;11(8):506–14. <https://doi.org/10.1038/nrgastro.2014.66>.
- [14] Tao YW, Gu YL, Mao XQ, Zhang L, Pei YF. Effects of probiotics on type II diabetes mellitus: a meta-analysis. *J Transl Med* 2020;18(1):30. <https://doi.org/10.1186/s12967-020-02213-2>.
- [15] Li G, Feng H, Mao XL, Deng YJ, Wang XB, Zhang Q, et al. The effects of probiotics supplementation on glycaemic control among adults with type 2 diabetes mellitus: a systematic review and meta-analysis of randomised clinical trials. *J Transl Med* 2023;21(1):442. <https://doi.org/10.1186/s12967-023-04306-0>.
- [16] Suastika AV, Widiana IGR, Fatmawati NND, Suastika K, Paulus IB, Sujaya IN. The role of probiotics and synbiotics on treatment of gestational diabetes: systematic review and meta-analysis. *AJOG Glob Rep* 2024;4(1):100285. <https://doi.org/10.1016/j.xagr.2023.100285>.
- [17] Wu R, Luan J, Hu J, Li Z. Effect of probiotics on pregnancy outcomes in gestational diabetes: systematic review and meta-analysis. *Arch Gynecol Obstet*. Online ahead of print.
- [18] Yefet E, Bar L, Izhaki I, Iskander R, Massalha M, Younis JS, et al. Effects of probiotics on glycemic control and metabolic parameters in gestational diabetes mellitus: systematic review and meta-analysis. *Nutrients* 2023;15(7):1633. <https://doi.org/10.3390/nu15071633>.
- [19] Bordalo Tonucci L, Dos Santos KM, De Lucas Fortes Ferreira CL, Ribeiro SM, De Oliveira LL, Martino HS. Gut microbiota and probiotics: focus on diabetes mellitus. *Crit Rev Food Sci Nutr* 2017;57(11):2296–309. <https://doi.org/10.1080/10408398.2014.934438>.
- [20] Kobyliak N, Khomenko M, Falalyeyeva T, Fedchenko A, Savchuk O, Tseyslyer Y, et al. Probiotics for pancreatic beta-cell function: from possible mechanism of action to assessment of effectiveness. *Crit Rev Microbiol*. Online ahead of print. <https://doi.org/10.1080/1040841X.2023.2257776>.
- [21] Homayouni A, Bagheri N, Mohammad-Alizadeh-Charandabi S, Kashani N, Mobaraki-Asl N, Mirghafurvand M, et al. Prevention of gestational diabetes mellitus (GDM) and probiotics: mechanism of action: a review. *Curr Diabetes Rev* 2020;16(6):538–45. <https://doi.org/10.2174/1573399815666190712193828>.

- [22] Zhang Z, Niu R, Zhang H, Ma T, Chen X, Pan L. Probiotic supplement for the prevention of gestational diabetes: a meta-analysis of randomized controlled trials. *Z Geburtshilfe Neonatol* 2023;227(1):24–30. <https://doi.org/10.1055/a-1956-3927>.
- [23] Chu X, Yan P, Zhang N, Feng L, Li X, Wang Y, et al. Probiotics for preventing gestational diabetes mellitus in overweight or obese pregnant women: a systematic review and meta-analysis. *Clin Nutr ESPEN* 2022;50:84–92. <https://doi.org/10.1016/j.clnesp.2022.05.007>.
- [24] Wang D, Liu J, Liu J, Lai QY, Lin J, Wu Q, et al. Study on preventing gestational diabetes mellitus with probiotics during pregnancy. *J China Prescrip Drug* 2019;17(2):122–3.
- [25] Cao XF. Clinical effect analysis of probiotics in pregnancy to prevent pregnancy diabetes. *China Pract Med* 2020;15(9):122–4.
- [26] Godfrey KM, Barton SJ, El-Heis S, Kenealy T, Nield H, Baker PN, et al. Myo-Inositol, probiotics, and micronutrient supplementation from preconception for glycemia in pregnancy: NiPPER international multicenter double-blind randomized controlled trial. *Diabetes Care* 2021;44(5):1091–9. <https://doi.org/10.2337/figshare.13874705.v1>.
- [27] Shahriari A, Karimi E, Shahriari M, Aslani N, Khooshideh M, Arab A. The effect of probiotic supplementation on the risk of gestational diabetes mellitus among high-risk pregnant women: a parallel double-blind, randomized, placebo-controlled clinical trial. *Biomed Pharmacother* 2021;141:111915. <https://doi.org/10.1016/j.biopha.2021.111915>.
- [28] Baloch P, Nawaz N, Maqsood S, Soomro P, Tahir H, Bala M. Effect of probiotics on preventing gestational diabetes among high-risk pre-diabetic pregnant women: a randomized controlled trial. *Ann Roman Soc Cell Biol* 2022;26(1):406–13.
- [29] Liu J, Jiao LY, Yang ZH. Effect of probiotics in overweight and obese pregnant women. *J Clin Med Pract* 2022;26(22):115–8.
- [30] Page MJ, McKenzie JE, Bossuyt PM, Boutron I, Hoffmann TC, Mulrow CD, et al. The PRISMA 2020 statement: an updated guideline for reporting systematic reviews. *BMJ* 2021;372:n71. <https://doi.org/10.1136/bmj.n71>.
- [31] Page MJ, Moher D, Bossuyt PM, Boutron I, Hoffmann TC, Mulrow CD, et al. PRISMA 2020 explanation and elaboration: updated guidance and exemplars for reporting systematic reviews. *BMJ* 2021;372:n160. <https://doi.org/10.1136/bmj.n160>.
- [32] Higgins J, Thomas J, Chandler J, Cumpston M, Li T, Page M, et al. *Cochrane handbook for systematic reviews of interventions version 6.2. The Cochrane collaboration [Internet]. 2021. Available from: www.training.cochrane.org/handbook.*
- [33] Higgins JP, Thompson SG, Deeks JJ, Altman DG. Measuring inconsistency in meta-analyses. *BMJ* 2003;327(7414):557–60. <https://doi.org/10.1136/bmj.327.7414.557>.
- [34] Egger M, Davey Smith G, Schneider M, Minder C. Bias in meta-analysis detected by a simple, graphical test. *BMJ* 1997;315(7109):629–34. <https://doi.org/10.1136/bmj.315.7109.629>.
- [35] Luoto R, Laitinen K, Nermes M, Isolauri E. Impact of maternal probiotic-supplemented dietary counselling on pregnancy outcome and prenatal and postnatal growth: a double-blind, placebo-controlled study. *Br J Nutr* 2010;103(12):1792–9. <https://doi.org/10.1017/S0007114509993898>.
- [36] Lindsay KL, Kennelly M, Culliton M, Smith T, Maguire OC, Shanahan F, et al. Probiotics in obese pregnancy do not reduce maternal fasting glucose: a double-blind, placebo-controlled, randomized trial (probiotics in pregnancy study). *Am J Clin Nutr* 2014;99(6):1432–9. <https://doi.org/10.3945/ajcn.113.079723>.
- [37] Wickens KL, Barthow CA, Murphy R, Abels PR, Maude RM, Stone PR, et al. Early pregnancy probiotic supplementation with *Lactobacillus rhamnosus* HN001 may reduce the prevalence of gestational diabetes mellitus: a randomised controlled trial. *Br J Nutr* 2017;117(6):804–13. <https://doi.org/10.1017/S0007114517000289>.
- [38] Callaway LK, McIntyre HD, Barrett HL, Foxcroft K, Tremellen A, Lingwood BE, et al. Probiotics for the prevention of gestational diabetes mellitus in overweight and obese women: findings from the SPRING double-blind randomized controlled trial. *Diabetes Care* 2019;42(3):364–71. <https://doi.org/10.2337/dc18-2248>.
- [39] Okesene KAM, Li M, McKinlay CJD, Taylor RS, Rush EC, Wall CR, et al. Effect of antenatal dietary interventions in maternal obesity on pregnancy weight-gain and birthweight: healthy mums and babies (HUMBA) randomized trial. *Am J Obstet Gynecol* 2019;221(2):152e1–e13. <https://doi.org/10.1016/j.ajog.2019.03.003>.
- [40] Pellonpera O, Mokkalä K, Houttu N, Vahlberg T, Koivuniemi E, Tertti K, et al. Efficacy of fish oil and/or probiotic intervention on the incidence of gestational diabetes mellitus in an at-risk group of overweight and obese women: a randomized, placebo-controlled, double-blind clinical trial. *Diabetes Care* 2019;42(6):1009–17. <https://doi.org/10.2337/dc18-2591>.
- [41] Asgharian H, Homayouni-Rad A, Mirghafourvand M, Mohammad-Alizadeh-Charandabi S. Effect of probiotic yoghurt on plasma glucose in overweight and obese pregnant women: a randomized controlled clinical trial. *Eur J Nutr* 2020;59(1):205–15. <https://doi.org/10.1007/s00394-019-01900-1>.
- [42] Halkjaer SI, de Knecht VE, Lo B, Nilas L, Cortes D, Pedersen AE, et al. Multistrain probiotic increases the gut microbiota diversity in obese pregnant women: results from a randomized, double-blind placebo-controlled study. *Curr Dev Nutr* 2020;4(7):nzaa095. <https://doi.org/10.1093/cdn/nzaa095>.
- [43] Metzger BE, Gabbe SG, Persson B, Buchanan TA, Catalano PA, Damm P, et al. International Association of Diabetes and Pregnancy Study Groups recommendations on the diagnosis and classification of hyperglycemia in pregnancy. *Diabetes Care* 2010;33(3):676–82. <https://doi.org/10.2337/dc10-0719>.
- [44] Benhalima K, Van Crombrugge P, Hanssens M, Devlieger R, Verhaeghe J, Mathieu C. Gestational diabetes: overview of the new consensus screening strategy and diagnostic criteria. *Acta Clin Belg* 2012;67(4):255–61.
- [45] Lean SC, Derricott H, Jones RL, Heazell AEP. Advanced maternal age and adverse pregnancy outcomes: a systematic review and meta-analysis. *PLoS One* 2017;12(10):e0186287. <https://doi.org/10.1371/journal.pone.0186287>.
- [46] Alwash SM, McIntyre HD, Mamun A. The association of general obesity, central obesity and visceral body fat with the risk of gestational diabetes mellitus: Evidence from a systematic review and meta-analysis. *Obes Res Clin Pract* 2021;15(5):425–30. <https://doi.org/10.1016/j.orcp.2021.07.005>.
- [47] Wang X, Liu H, Li Y, Huang S, Zhang L, Cao C, et al. Altered gut bacterial and metabolic signatures and their interaction in gestational diabetes mellitus. *Gut Microbes* 2020;12(1):1–13. <https://doi.org/10.1080/19490976.2020.1840765>.
- [48] Plows JF, Stanley JL, Baker PN, Reynolds CM, Vickers MH. The pathophysiology of gestational diabetes mellitus. *Int J Mol Sci* 2018;19(11):3342. <https://doi.org/10.3390/ijms19113342>.
- [49] Hasain Z, Raja Ali RA, Ahmad HF, Abdul Rauf UF, Oon SF, Mokhtar NM. The roles of probiotics in the gut microbiota composition and metabolic outcomes in asymptomatic post-gestational diabetes women: a randomized controlled trial. *Nutrients* 2022;14(18):3878. <https://doi.org/10.3390/nu14183878>.
- [50] Hasain Z, Che Roos NA, Rahmat F, Mustapa M, Raja Ali RA, Mokhtar NM. Diet and pre-intervention washout modifies the effects of probiotics on gestational diabetes mellitus: a comprehensive systematic review and meta-analysis of randomized controlled trials. *Nutrients* 2021;13(9):3045. <https://doi.org/10.3390/nu13093045>.
- [51] Mijatovic-Vukas J, Capling L, Cheng S, Stamatakis E, Louie J, Cheung NW, et al. Associations of diet and physical activity with risk for gestational diabetes mellitus: a systematic review and meta-analysis. *Nutrients* 2018;10(6):698. <https://doi.org/10.3390/nu10060698>.



## Related articles published in BJBMS

1. [Serum copeptin in women with gestational diabetes mellitus: A meta-analysis](#)

Yuanqi He et al., Biomol Biomed, 2024

2. [Ultrasonographic abdominal adipose tissue thickness for the prediction of gestational diabetes mellitus: A meta-analysis](#)

Shuhong Hou et al., Biomol Biomed, 2023

3. [Raised levels of chemerin in women with preeclampsia: A meta-analysis](#)

Yue Xie et al., Biomol Biomed, 2023